



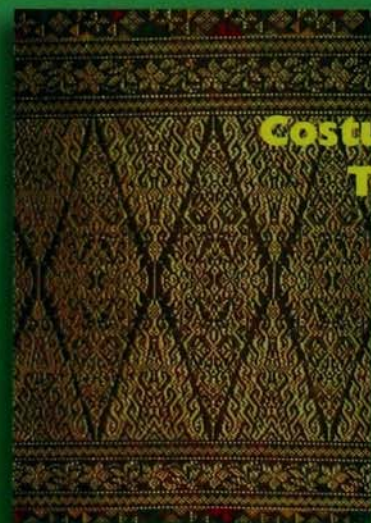
SPAFA JOURNAL

SPAFA
SEAMEO REGIONAL CENTRE FOR ARCHAEOLOGY AND FINE ARTS

A Publication of the SEAMEO Regional Centre for
archaeology and fine arts



Filipino Textile: Conservation and Preservation




**also:
Costumes and
Textiles of
Brunei**



Volume 11 Number 2 May-August 2001

ISSN 0858-1975



SEAMEO-SPAFA Regional Centre for Archaeology and Fine Arts

SPAFA Journal is published three times a year by the SEAMEO-SPAFA Regional Centre for Archaeology and Fine Arts. It is a forum for scholars, researchers and professionals on archaeology, performing arts, visual arts and cultural activities in Southeast Asia to share views, research findings and evaluations. The opinions expressed in this journal are those of the contributors and do not necessarily reflect the views of SPAFA.

SPAFA's objectives :

- ▶ Promote awareness and appreciation of the cultural heritage of Southeast Asian countries through preservation of archaeological and historical artifacts, and traditional arts;
- ▶ Help enrich cultural activities in the region;
- ▶ Strengthen professional competence in the fields of archaeology and fine arts through sharing of resources and experiences on a regional basis;
- ▶ Increase understanding among the countries of Southeast Asia through collaboration in archaeological and fine arts programmes.



Editorial Board

Pisit Charoenwongsa
Professor Khunying Maenmas Chavalit
Manote Kongdananda

Production Services

Vassana Taburi
Wanpen Kongpoon
Wilasinee Thabuengkarn
Katell Guizion
Andria Hickey

Publication Co-ordinator

Ean Lee

Photographic Services

Nipon Sud-Ngam

Cover

main photograph by Nipon Sud-Ngam

Printers



Amarin Printing and Publishing
Public Company Limited
65/16 Chaiphak Road,
Taling Chan, Bangkok 10170, Thailand
Tel. 882-1010 (30 Lines)
Fax. 433-2742, 434-1385
E-Mail : info@amarin.co.th
Homepage : <http://www.amarin.co.th>

Annual Subscription Rates:

US \$27 (Air Mail)
US \$24 (Surface Mail)
US \$19/Baht 465 (Within Thailand)

Cost Per Issue: US \$6/Baht 150

Send comments, articles and information (on workshops, seminars, conferences, training, etc..) to :

SPAFA Journal
SPAFA Regional Centre
SPAFA Building
81/1 Sri Ayutthaya Road, Samsen, Theves
Bangkok 10300, Thailand
Tel. (662) 280-4022-29 Fax. (662) 280-4030
E-mail : spafa@ksc.th.com
Website : www.seameo.org/spafa

The SEAMEO Regional Centre for Archaeology and Fine Arts (SPAFA) promotes professional competence, awareness and preservation of cultural heritage in the fields of archaeology and fine arts in Southeast Asia. It is a regional centre constituted in 1985 from the SEAMEO Project in Archaeology and Fine Arts, which provided the acronym SPAFA. The Centre is under the aegis of the Southeast Asian Ministers of Education Organization (SEAMEO).

SEAMEO-SPAFA member-countries:

- Brunei
- Cambodia
- Indonesia
- Laos
- Malaysia
- Myanmar
- Philippines
- Singapore
- Thailand
- Vietnam

Associate member-countries:

- Australia
- Canada
- Germany
- France
- New Zealand
- Netherlands

SEAMEO-SPAFA collaborates with governmental agencies, international organisations and academic institutions to achieve common goals and objectives.



SEAMEO-SPAFA Regional Centre
for Archaeology and Fine Arts

SERVICES AND FACILITIES

- Full-facility conference and lecture rooms
- Accommodation/guestrooms for rental
- Exhibition/display hall
- Applied Science Laboratory
- Library and documentation centre
- Publication and audio-visual production services
- Training/Seminars/Workshops/Research

ACADEMIC CONSULTANCY SERVICES

- Impact Assessment on Cultural Resources
- Rescue Archaeology/History
- Museum Exhibit, Design and Curatorship
- Arts and Culture Management
- Performing Arts Management
- Cultural Tours
- Consultancy Services on Teachers Training for Art Curriculum Development



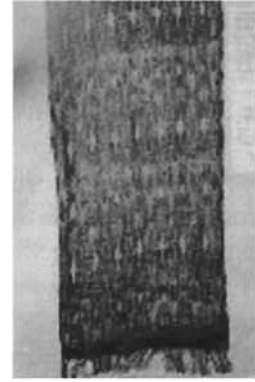
SPAFJ Journal

Volume 11 Number 2 (May - August 2001)

CONTENTS

Evelyn Elvena	5	Filipino Textiles: Conservation and Preservation Case Study: Conservation/ Restoration of the <i>Isinai</i> Blanket
Bantong bin Antaran	11	Costumes and Textiles of Brunei: History and Evolution
	21	<i>Conferences</i>
	25	<i>Art Galleries / Museums</i>
Ean Lee	51	<i>World Wide Web Sites</i>
Khunying Maenmas Chavalit	56	<i>Bookmark</i>

Filipino Textiles: Conservation and Preservation



Evelyn Elvena, *Textile Conservator of the National Museum of the Philippines*, reports on the characteristics of Filipino textiles, weaving patterns, conservation and preservation techniques, status of ethno-archaeology and future plans of the museum for collections (including a section on actual conservation treatment carried out in the museum)

The National Museum of the Philippines has been documenting, collecting, preserving, exhibiting and fostering scholarly



Fig. 1 & 2 Handweaving Technique

study and the appreciation of art specimens with cultural and historical values. Recently, the museum was re-organised with expanded functions. One of the tasks is to preserve all museum collections, including textiles. The Ethnology Section of the Anthropology Division is responsible for the storage and exhibition of textiles while the Chemistry and Conservation Laboratory, under the same division, is concerned with the conservation and restoration activities.

The National Museum Collection

The National Museum textile collection range from costumes, blankets, blouses, skirts, malongs, head-dress, belts, scarfs, handkerchiefs, trousers, and other accessories. The designs

and decoration are varied, depending on the regions where they were made; and the technology used varies from back-strap

loom to handloom. (Fig. 1 & 2)

The motifs, designs and symbols reflect the social level or status, culture and character of the diverse ethnic groups, as well as the visions and wisdom of the weaver. The fibres commonly used are cotton, abaca and piña, all indigenous in the Philippines. The colours most used are indigo, violet, yellow, light green, black, brown, white, red, and magenta.

The National Museum holds the first evidence of weaving technology with the discovery of the Banton cloth. These earliest known textiles associated with a burial coffin found in Banton Islands, Romblon dated 13th to 14th century AD. It is a remnant of Ikat-abaca, and

was found in good condition. It measures 81 cm x 21 cm, and has been restored and framed.

Other examples of archaeological textiles belonging to the museum are those worn by mummies found in the Kabayan caves in Benguet, Northern Luzon, which are 700 years old. The dimensions of these textiles are 49 cm x 29 cm. Some of these pieces were analysed and conserved at the laboratory for display purposes. (Fig. 3 & 4)

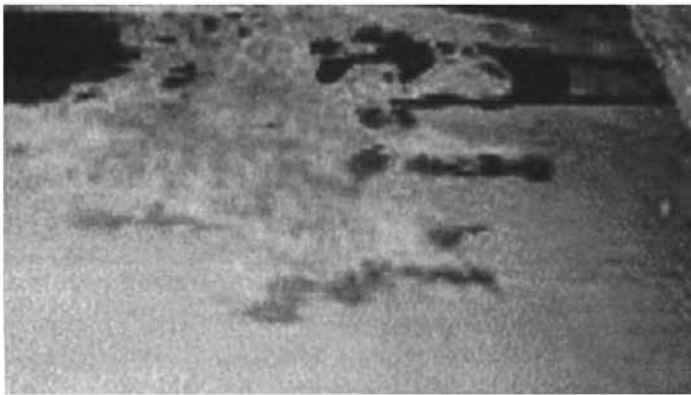


Fig. 3 Kabayan Mummy Cloth Before Conservation

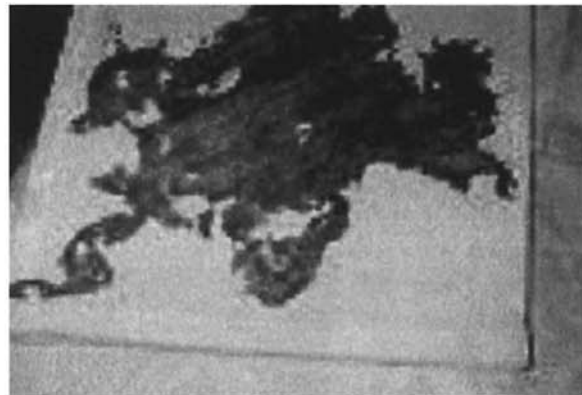


Fig. 4 Kabayan Mummy Cloth After Conservation

In Luzon, textiles are woven by a method referred to as the 'supplementary weft', and bear dark-coloured backgrounds, such as blue and black with yellow, white and red designs woven into them. (Fig. 5 & 6)



Fig. 5 Northern Luzon Textile Design



Fig. 6 Color Combination of an Ifugao Cloth

sequences. The base fabric colours are maroon, red, yellow, and blue; and the Bagobos make traditional tinalak with special narrative designs of clouds, hair bangs, butterfly, crocodile, lizard, and frog. The tinalak weaving carries certain taboo rituals, such as passing a single abaca

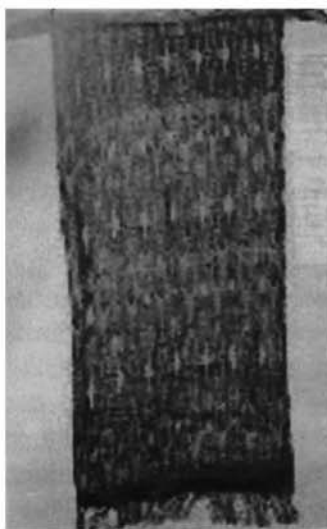


Fig. 7 Wall Decor

thread all over the body before weaving, so as to prevent illness (Fig. 7).

The Manobo, Mandaya, Bilaan, Tboli fabrics are woven using anthropomorphic, zoomorphic and geometric motifs. While the ikat of the Maranao and Maguindanao contain an 8-pointed star, the Muslims apply the images of insects, trees and flowers, and other geometric designs on theirs.

Philippine vestments are primarily found in church museums. These include saints' costumes, chasubles, the manipole, dalmatics, the mantle, belts, and capes. They are made of satin cloth, and are heavily decorated with metal, and gold threads in colours of gold, silver, violet, pink, black, blue, orange, and green. (Fig. 8 & 9)

Fig. 9 Full view of Gold threaded cape

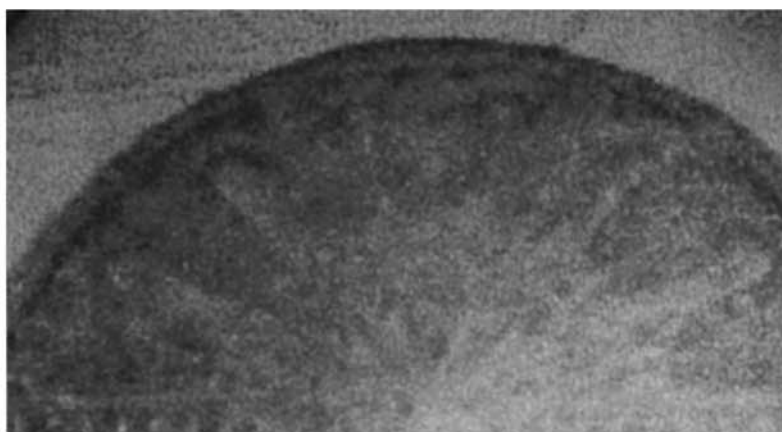
Status of the Ethno-archaeology of Textiles and their Preservation

The National Museum have a very small collection of archaeological textiles, but all the major weaving techniques (for examples, the supplementary weft, cordage, and handloom) are represented. The present ethnographic textile collections, however, are quite large, and represent all the ethnic groups in the country.

One of the means of preserving the technology of traditional weaving was the establishment in 1992 of the award, 'Gawad ng Manlilikha ng Bayan'. This project, under the auspices of the National Commission for Culture and the Arts (of the Office of the President) focuses on the importance of Philippine arts and folk crafts. The finest folk artists in the Philippines are identified and honoured, to promote the unique aspects of Philippine culture and the preservation of traditional knowledge and skills. Awarded are artists who still apply skills, native methods and indigenous materials in creating exquisite and valuable artworks which reflect the voice and vision of the country's weavers excelling in creating fabrics from indigenous materials.



Fig. 8 Close up of Cape Design



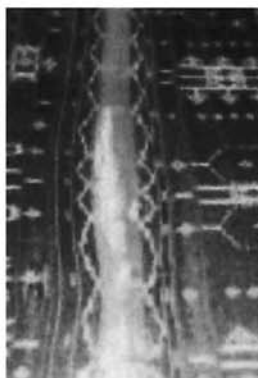
There is an immense concern in the Philippines today on the preservation of its textiles. Most curators and museum staff are aware of the importance of collection management. Some workers are sent abroad to attend training to learn new and improved preservation techniques, and seminars and workshops are conducted under the supervision of the National Museum in collaboration with the National Commission for Culture and the Arts. Participants of these activities are taught to handle the delicate materials properly, whether in storage or display case. For exhibition purposes, the museum is using new technologies for the conservation of textiles on display.

Future Plans for the Textile Collection

The Ethnology Section of the Anthropology Division has plans relating to better safekeeping of textiles, and world-class exhibition and storage areas. The plan is to create a visible storage space as an exhibition area as well, which will allow visitors to view all the collections, while information on the materials will be retrievable from computers outside of the room. Under this system, researchers will be able to handle/study the collections but will be required to request in advance (at least 2 months) to provide the museum staff time for scheduling their work activities. Eventually, the Ethnology Section will produce a CD-ROM, and publish a catalogue of the entire textile holdings to facilitate the conservation processes, and also to enhance the museum's collections overall.

Case Study: Conservation/Restoration of the *Isinai* Blanket

The textile is a very rare *Isinai* blanket. This was donated to the National Museum by Ambassador Ernesto M. Maceda of the Philippine Embassy in the USA. As one of the three extant



examples of the *Isinai* weaving tradition, the blanket was mailed to the Philippines in 1988. It was originally owned by Capt. Harry King who served in the Philippines during the Spanish American War.

The conservation process:

1. analysis of the dyes and fibres
2. mechanical and chemical cleaning
3. restoration

Description

The specimen is a plainly woven *Isinai* "death" blanket. This was worn by the upper class of society in Ifugao province, northern Luzon. Two pieces of loosely woven cloth with symmetrical designs were sewn together to form the entire piece. It measures 218 cm x 155 cm and has a weave count of 52 x 26 threads per square inch. The fibres come from cotton plant, and are red, blue, and white, accentuated by diamond, stars, floral and geometrical designs. There is a difference in colour tone between the left and right sides (one side is lighter in colour than the other) (Fig. 10).

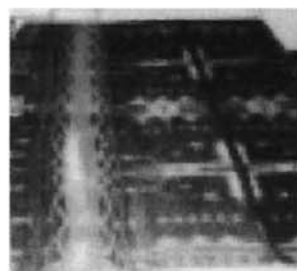


Fig. 10 *Isinai* blanket Before Conservation

Condition

The object, which is very dusty, is generally in a stable condition except for some parts which have loose and weakened fibres due to mishandling. There are holes and entangled fibres on one end. The areas that are heavily destroyed are the red coloured fibres. (Fig. 11)

Fig. 11 Showed the deteriorated areas

Conservation Treatment

Materials:

Blue cotton cloth, red and blue organza filaments, tweezer, glass slides, cover slips, strainer, threads, needle, scissors, pins.

Chemicals:

Varsol, thymol crystals

Equipment:

Polarising microscope, fumigation chamber, pick glass, table lamp, vacuum cleaner.

Actual Treatment:

The specimen was first fumigated in a fumigation chamber using thymol crystals as fumigant to kill insects. Then it was laid flat on a table and photo-documented. The fibres were identified under the polarising microscope. Dyes were analysed using the cotton swab method. The fibre strength was taken using the hand method, and the dust was removed by vacuum cleaner. (Fig. 12)



Fig. 12 Mechanical Cleaning using vacuum cleaner

The nozzle was wrapped with screen wire to avoid suctioning the fibres. Then it was chemically washed with varsol, supported by screen wire to lessen the pressure of the water. Drying was done in open air. The red-coloured stripes which have loose fibres were supported and handsewn, using the red organza filaments and applying the couching techniques to a pre-wash cotton cloth

(Fig. 13). To ensure that the whole blanket is safe and stable, it was sewn to a blue-coloured cotton cloth. All the four edges were secured in place with blue threads using the hem stitch (Fig. 14). It was again photo-documented to observe the restored areas (Fig. 15). After assessing the stability of the blanket, it was vacuum-cleaned and wrapped in acid-free paper.



Fig. 13 Aligning of Fibres



Fig. 14 Isinai Blanket sewn to a support

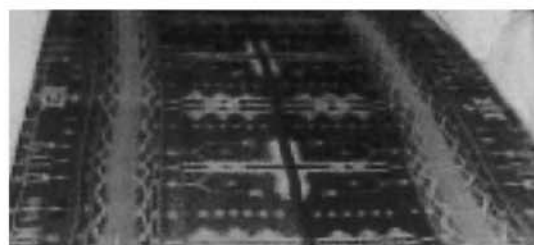


Fig. 15 The Blanket After Conservation

Care and Handling of Textiles:

1. All textiles must be placed away from direct sunlight, and if possible in exhibition galleries that limit their light exposure to an illumination amounting to greater than 50 lux.
2. Keep display areas, storage, and work-rooms free from dust and dirt.
3. Inspect regularly the entire textile collection to discover any signs of insect attack or damage by micro-organisms.
4. To avoid rust, never use pins or staple wires in storing or exhibiting them.
5. Carry textiles fully supported on trays and trolleys.
6. All foldings must be kept to a minimum, as far as possible. Folds should be padded with layers of acid-free tissue paper.
7. Handle textiles with a clean hand or use white gloves.

References

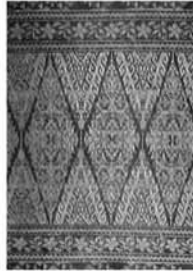
- Barbosa, Artemio A. Pan Philippine Weaving Tradition - May 2000 - pp. 1 - 5.
- Castro, Sandy Kitang-kita Ang Kaluluwa: Nipis Fabrics- p. 35 Araw, NCCA - May - June 2000
- Dizon, Eusebio Z. Textile in Archaeological Context - 1996
- Tobias, Maricris Jan Gawad ng Manlilikha ng Bayan , NCCA Newsletter - Vol. 5, No. 5, 1997 - pp. 16-17
- Final Report: Specialized Training Course on Conservation of MuseumTextiles - 1996
- Annual Report 1997 : A year of Service p. 30 - NCCA
- Artifacts - NM Newsletter, Vol 2, No.3, March 2000

Evelyn T. Elvena is a textile coordinator of the National Museum of the Philippines, who has been very much involved in textile conservation efforts, including training conservation staff and museum volunteers from other institutions. She participated in and contributed this paper during the 2000 Bangkok Seminar on Ethno-archaeology of Southeast Asian Textiles.

Handprints found

A team of archaeologists said (29-6-01) that they had uncovered 11 new caves with more than 500 prehistoric handprints, paintings and other rock art in the Indonesian province of Kalimantan on Borneo. The discovery of 375 handprints in one cave was "one of the most important finds" of the expedition, said Frenchman Luc-Henri Fage, one of the mission's leaders who presented their findings at a news conference in Singapore. – AFP

Costumes and Textiles of Brunei: History and Evolution



*Having long been a stopping point for visitors from diverse cultures in Asia, the Middle East and Europe, it is not surprising that the cultural tradition of Brunei Darussalam comprises various elements from these distant lands. The mode of dress, the arts, crafts, as well as architectural motifs, reflect aspects of Indian, Chinese, European and Islamic influence (which has been the most pervasive). Curator **Bantong bin Antaran** discusses the history of costumes and textiles in the country, and how they have been evolving.*

Brunei's population consists of seven indigenous groups. They are the Brunei Malays, the Kedayans, the Dusuns, the Tutong, the Belait, the Murut, and the Bisaya. Other ethnic groups living in Brunei that are indigenous to Borneo include the Penans forest nomads and the Ibans, who migrated into Brunei from Sarawak, Malaysia in the first half of the 20th Century. The diverse foreign cultures were readily accommodated by the equally diverse mix of indigenous cultural traditions.

Early Notes on Brunei Costumes and Textiles

One interesting approach in documenting Brunei's long history and rich legacy of costumes and textiles would be to trace the development of how Bruneians dressed themselves through the ages. There are few accounts that describe the clothes worn by early Bruneians.

The Chinese reported that during the Liang Dynasty of China (916 AD.), the King of P'oni (Brunei) Pin-ka wore clothes made of embroidered silk, and his subjects wore tunics and pants made of cotton. In 1225, Chau Ju Kua reported that the King in Brunei wore costumes similar to those worn by the Chinese. The wives and daughters of wealthy families were clad in what he described as 'melted-gold colored silk'; materials used in weaving *Kain Tenunan* or *Kain Sungkit*. He further noted that, on formal occasions the King himself dressed in the Chinese fashion, but otherwise followed the Javanese usage of a sarong and gold ornaments. The mentioned *Kain Tenunan* was possibly a material woven by the local people themselves.

During Yong Le's reign (1403-1424) in the Ming dynasty, the Chinese reported that the men of Brunei cut their hair, and bound their heads with a piece of scarlet cloth. The women let their

hair down to their shoulders. They tied scarves around their neck, and wore shirts and skirts but went barefooted.

The first European report on Brunei dress was written by Ludovico Varthema of Bologna in 1505. According to him, the people were pagan and men of good will. Their colour was white. The dress was cotton shirt, though some dressed in ciambelloto (dress made of goat fur); some wore red hats. Sixteen years later, Pigefetta, another European, came to Brunei and he offered more information. He noted that each of them was given brocaded and gold cloth and silk, which were placed upon their left shoulder. The men in the palace were all attired in cloth of gold and silk

that covered their privies and curved diggers with gold hafts adorned with pearls and precious gems, and they had many rings on their hands.

The next account was written by Marryat in 1848. He wrote that at the Sultan's court, they were received at the platform by a numerous party of chiefs, handsomely dressed in silks, satins and gold embroidery. There has been very little systematic documentation of Brunei dress during the early part of 20th Century; fortunately, there is a body of photographs and articles from newspapers and magazines available to the researcher. During World War Two, it was thought that many of the traditional garments were destroyed as people were always on the run and hid themselves for safety in remote areas and jungles as their houses were destroyed.

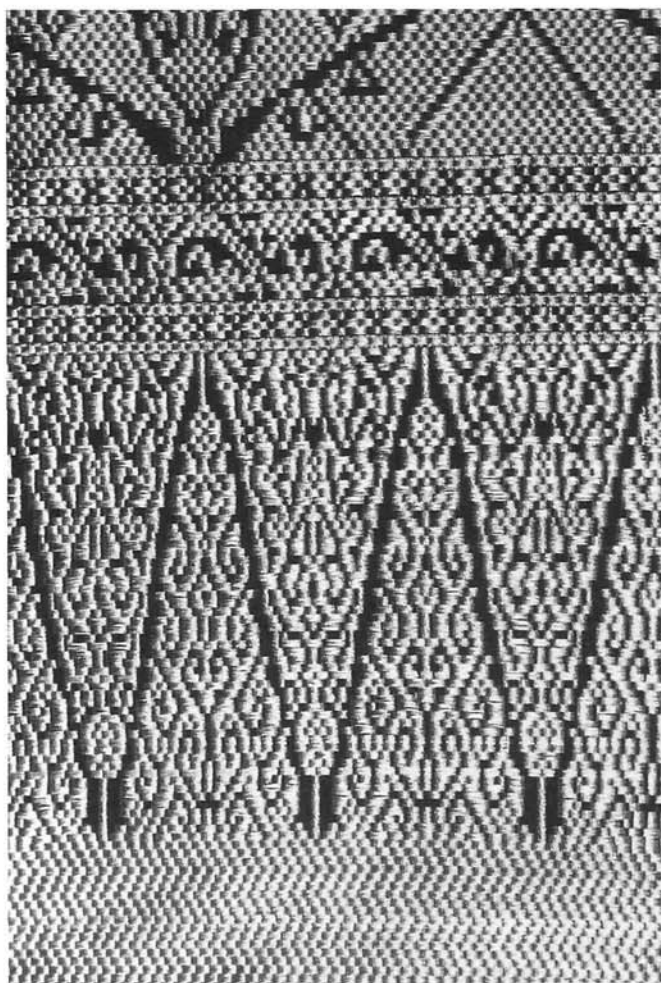
After World War Two, Western clothing, such as shirts, trousers, socks, shoes and hats, was introduced. This new style of clothing was slowly adopted by the locals and eventually became popular among the local 'elite'. Later, it became official government uniform.

In the 1950s, Malay movies became popular in Brunei Darussalam. The films were produced in Singapore and Malaysia, and the story background was normally based on the Malay culture. Apparently, many Bruneians imitated fashions introduced in some of those movies.

There is even less documentation for the development of clothing in the non-Malay indigenous groups. However, the traditional costumes of these indigenous groups appeared to have undergone little change, and some are still worn during special occasions. For example, the Murut wear their traditional bark cloth during cultural stage performances; the Dusun and the Belait don their traditional dark coloured attire during rice ritual ceremonies; and the Kedayan are dressed in their traditional costumes during dance performances.

Cloth Weaving

One of the most popular handicraft activities in Brunei Darussalam is traditional weaving (locally known as *Kain tenunan*). The craft industry has been handed down for generations, and is



P2 : The bamboo shoot motif

believed to be in existence since the thirteenth Century. In 1225 AD., it was recorded by the Chinese that the people of Brunei were seen to have worn attire made of woven cloth, i.e., the *kain tenunan* which was probably woven by the Bruneians themselves. The role of *kain tenunan* in the historical development of the Brunei traditional costumes is significant, and local *kain tenunan* products are very important ceremonial garments. The woven cloth is a ceremonial costume, and is also worn in social occasions; for example, in a wedding ceremony, the bride and groom may wear the *Baju Pengantin*, made of woven cloth with an intricate pattern of gold and silver threads; the male guests dress themselves up in the *Baju Cara Melayu*, [p4] with a *kain sinjang* or *samping* (piece of cloth tightened around the waist) to complete the attire. This *kain sinjang* or *samping* is normally made of local *Kain Tenunan*. Indeed, it was argued that no Malay wedding would be complete without a traditional *kain Tenunan* that is usually of the *Kain Jong Sarat* type, made of plain cloth with an intricate pattern of gold or silver thread. Similar attire is normally used when attending State functions. The woven fabrics can also be made into the attractive *Baju Kebaya*, which is a type of dress that is rather costly to produce.

The basis of any woven cloth is the crossing of two threads at right angles to each other. The vertical and horizontal threads are called warps and wefts respectively. Warp threads are fixed at each end of the loom, and have to be stronger than the wefts as they take the friction of the continual passing of the shuttle carrying the weft threads. Today's weavers, however, have designed more complicated and delicate techniques of weaving in order to produce a fine and beautifully patterned cloth; for example, they use different colours and types of thread, such as gold and silver. It is, of course, a very time-consuming process.

Motif is a very important factor in making the *kain tenunan* more attractive. The Brunei traditional weavers used no less than fifty different types of patterns, which are given local names. The most common motifs found in *kain tenunan* are the *puckor rebong* (bamboo shoot)

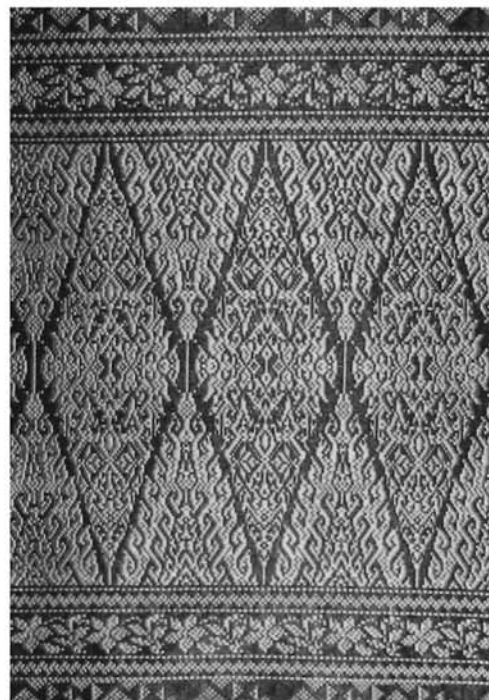
[see P2 opposite page], *biji timun* (cucumber seeds), *arap gegati* (diamond shape motif) and floral motif. [see P3].

The traditional weaving industry was developed in Kampong Ayer (water village) situated next to the capital of Brunei Darussalam. Dynamic and positive steps are now being taken to revive this old skill to meet the demand of the public. The governmental training programme is available at the Brunei Handicraft Centre (established in 1975), Brunei Museums, Ministry of Culture Youth and Sports. There are more than four hundred trained weavers in Brunei Darussalam today, some of whom were taught this skill at the Center or by their elders. Unfortunately, only half of them are still active.

Costumes

Baju Cara Melayu

Baju Cara Melayu comprises a tunic or loose long sleeved shirt (*baju*), a pair of loose long pants or



P3 : The floral motif

trousers (*seluar*), a *samping* or *sinjang* (a *sarong* worn around the waist over the shirt and pants), and a *kopiah* or *songkok* (headgear). Among the Malays, *Baju Cara Melayu* is worn on various occasions, either social or religious in nature. For State functions, one is obliged to wear a pair (*sepengadak*) of white-coloured *Baju Cara Melayu* for evening receptions, and dark-coloured one during the day.



P4 : *Baju Cara Melayu Teluk Belangah*



P5 : *Baju Melayu Cekak Musang*



P6 : *Baju Cara Melayu Begulambir*

The *Baju Cara Melayu* is normally worn with a black velvet *songkok*. During an ordinary function, *songkok* can be of any colour, e.g. black, maroon, white, blue or green. It was argued that the *Baju Cara Melayu* probably originated in the Arabic or Javanese tradition. The Bruneians adopted the *Baju Cara Melayu* from Malaysia. Over the years various minor alterations had been made on the costumes, which resulted into what we see today.

There are three types of *Baju Cara Melayu*, Brunei's national dress; namely: **Baju Cara Melayu Teluk Belangah** [see P4], **Baju Cara Melayu Cekak Musang** [see P5] and **Baju Cara Melayu Begulambir**. There is only a slight difference among the three; for example, *Baju Cara Melayu Cekak Musang* and *Baju Cara Melayu Begulambir* are both designed with a high round collar, while the *Baju Cara Melayu Teluk Belangah* does not have a collar. The *Baju Cara Melayu Begulambir* [see P6] has a square cloth-cumhandkerchief attached onto the front-neck, which differentiates it from *Baju Cara Melayu Cekak Musang*.

The *Baju Cara Melayu Teluk Belangah* originated in Johor, West Malaysia, and was popularized in Brunei during the 1950s. In Malaysia, it is also called *Baju Kurong Telok Belanga*, and it is

believed to have come into existence around 1800, at Telok Belanga in Singapore, then the administrative seat of the Johor Sultanate. The *Baju Cara Melayu Cekak Musang* originated in Malaysia, and became popular in the 1930s. It also introduced to Brunei during the 1950s. Both the *Baju Cara Melayu Cekak Musang* and *Baju Cara Melayu Telok Belanga* are common dress in Brunei

The *Baju Cara Melayu Telok Belanga* originated in Johor, West Malaysia, and was popularized in Brunei during the 1950s. In Malaysia, it is also called *Baju Kurong Telok Belanga*, and it is



P7 : *Baju Butang Lima*

believed to have come into existence around 1800, at Telok Belanga in Singapore, then the administrative seat of the Johor Sultanate. The *Baju Cara Melayu Cekak Musang* originated in Malaysia, and became popular in the 1930s. It also introduced to Brunei during the 1950s. Both the *Baju Cara Melayu Cekak Musang* and *Baju Cara Melayu Telok Belanga* are common dress in Brunei

Darussalam, while *Baju Cara Melayu Begulambir* was designed for people of high status in the Royal Court.

Baju Butang Lima

During the 1930s, another garment, the *Baju Butang Lima* [see P7], was the most common dress worn by men when attending specific functions. This was a long-sleeved, hip-length blouse with an open front tunic fastened with five small buttons and worn with a pair of loose trousers and a *sinjang*.

Baju Kurong

The national dress for women is called *Baju Kurong* and *Baju Kebaya*. The *Baju Kurong* [see P8] is an official dress in government offices, and is also worn as a uniform in schools. It comprises of a long sleeved and knee-length blouse and an ankle-length skirt, commonly called *sarong*. In Brunei Darussalam, *Baju Kurong* is now commonly worn with a *tudong* (headcover), a triangular scarf normally of matching colour, in almost all social and religious occasions. The blouse and the *sarong* are normally made from the same materials (*seperampun*). Some *tudong* are also made from the same material as that of the *Baju Kurong* and its *sarong*. However, this need not always be the case. For example, it is common for women to wear *batek sarong* daily. At present, the *Baju Kurong* and its *sarong* are generally made of silk (Korean, Chinese or Italian silk), reflecting the recent affluence that Bruneians enjoy.



P8 : Baju Kurong

The blouse is embroidered with intricate designs, sewn with multi-coloured threads and beads, especially along the hemline of the blouse, the neckline and the bottom-edge of the blouse. During a state reception,

the women are required to wear a dark-coloured *Baju Kurong* and a dark-coloured *tudong* (head cover or a scarf) during the day, and the white-coloured *Baju Kurong* during the night. For an

ordinary function, *Baju Kurong* and *tudong* worn can be of any colour, pattern or design.

The *Baju Kurong* introduced here was from Malaysia in the 1900s. It is now commonly worn in Brunei Darussalam, Malaysia, Singapore and parts of Indonesia, as it has been suggested that the *Baju Kurong* went to Indonesia via Muslims traders from western India.

Baju Kebaya

It is believed that the word 'Kebaya' was derived from the Arabic word 'habaya', meaning a long tunic with a front opening. It was adopted from the Portuguese in Malacca during the sixteenth or seventeenth Century, and popularized by the Chinese Peranakan. The *Baju Kebaya* is a long-sleeved blouse that is worn over an ankle-length skirt called *Kain Lapas* or a *Kain Sarong*. There are four types of *Kebaya* worn by Brunei women, locally known as *Kebaya Panjang*, *Kebaya Labuh*, *Kebaya Buntak/Pendek* and *Kebaya Bandung*.

Kebaya Panjang (Long *Kebaya*). The *Kebaya Panjang* [see P9] is a knee-length, long-sleeved blouse, worn over a *kian lapas* or a *kain sarong*. This blouse is often elaborately embroidered with floral designs on the cuffs and the front lapel, with a neckline that is usually 'V'-shaped. The *Kain lapas* is an ankle length skirt made either from cotton or silk, interwoven with metallic or gold



P9 : Kebaya Panjang



P10 : Kebaya Labuh

threads, or of *batek* cloth. Most of the *kain lapas* is imported either from Malaysia, Indonesia or Singapore. One of the most popular *kain* worn by the locals in the 1950s was called *Kain Bugis*, and was first introduced to Brunei in the 1930s. A *kain sarong* on the other hand is an ankle-length tubular skirt of tubular shape (formed by wrapping the cloth around the hips). It is either made from plain- coloured or cotton, silk, interwoven with metallic or gold threads or of patterned-*batek*.

Kebaya Labuh (Loose *Kebaya*). Another variety of the *Kebaya Panjang* is known as the *Kebaya Labuh* [see P10]. This *Kebaya* is a loose-



P11 : *Kebaya Buntak*

fitting long blouse, worn with the *Baju Pontong* as an undergarment. The blouse is designed with some small buttons as fasteners. *Kebaya panjang* does not accentuate the shape of the body of the wearer as compared to the other *Kebaya*, and although it is normally worn by older women, recent trends show that this dress is becoming more popular.

Kebaya Buntak/Pendek (Short *Kebaya*). In contrast with the *Kebaya Panjang* is the *Kebaya Buntak/Pendek* (short *Kebaya*). *Kebaya Buntak* [see P11] has been popular in Malaysia since

1920, and is also known as *Kebaya Nyonya*, *Baju Bandung* or *Baju Kota Baru*. It was introduced in Brunei during the 1950s, and was popular during the 1960s and 1970s. Popular among the young women, *Kebaya Buntak* consists of a figure-hugging blouse, and is made to emphasize the shape of the body.

Kebaya Bandung (the *Bandung Kebaya*). The *Kebaya Bandung* originated from Bandung, Indonesia, from which its name was derived. It was introduced in Brunei during the early 1950s. A similar version of this *Kebaya* was also found in Kupang, West Timur, Indonesia, where it is usually worn by the bridegroom. The *Kebaya Bandung* [see P12] consists of a long-sleeve blouse that is hip-length, usually made of cotton material, and worn over an ankle-length *kain lapas* or *sarong* or patterned *batek*. The most peculiar feature about the *Kebaya Bandung* is that the edge of its bottom front blouse is cut into a 'V' shape, and this differentiates it from the *Kebaya Buntak*.

Wedding Attire

It goes without saying that no Malay wedding would be complete without *Kain Jongsarat*, a traditional cloth made of cotton threads interwoven with an intricate pattern of gold or silver threads



P12 : *Kebaya Bandung*



P13 : *Pakaian Pengantin Bersanding*

to produce strikingly beautiful patterns. For the bride, the cloth is made into *Kebaya Panjang* or *Baju Kurong*, embroidered with floral patterns. It is usually worn over a beautiful *sarong* with intricate edgings, and comes with a matching *salendang* (a long scarf). The bride also wears a glittering veil with a tiara on top of her head. This cloth is also used for making the wedding suit of the bridegroom, consisting of a shirt, trousers, a fourinch wide waistband, a *samping*, (a knee-length *sarong* wrapped round the waist) and a *dastar* (headgear).

Another type of wedding attire for men is a knee-length jacket called *Baju Jubah*, introduced to Brunei Darussalam in the 1940s, and was popu-

lar for only a very short period until after the Japanese occupation in 1948. The jacket is worn over a long-sleeved shirt and a pair of trousers or a *Baju Cara Melayu*. On some occasions, a long blouse (knee-length) called *Baju Gamis* was also worn as an alternative. This costume, complete with a *tengkolok* (head cloth made of voile *kain kasa*), was worn by the groom on the third day of the wedding ceremony, called 'Muleh Tiga Hari' (literally means the day when the bride and groom return to the groom's family after a three-day stay with the bride's family). The *Baju Jubah* was made of silk and cotton or purely cotton, and for some ritual reasons bright colours were preferable; while the *Gamis* was either made of poly-

ter or silk and normally white in colour. The origin of the *Baju Jubah* is thought to be Arabic. Another dress option for the bride is *Baju Bermasuk Butang Lima* (literally a blouse with five buttons) worn over a *kain jong sarat*, a traditional *sarong*, woven elaborately with intricate floral designs. It was secured at the waist with an ornate gilded silver belt or sometimes a gold one (for the wealthy). The *Baju Bermasuk Butang Lima* is a long sleeved collarless blouse of hip-length tunic either made of satin, cotton, polyester or silk. Similar to the groom's attire, the bride's attire was also bright in colour; preferably purple, red, or green.



P14 : *Baju Jubah Berlapis Gamis*

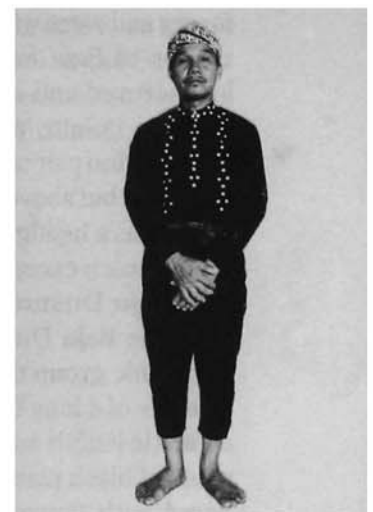
P15 : *Baju Pontong*

P16 : *Baju Kedayan*

lar for only a very short period until after the Japanese occupation in 1948. The jacket is worn over a long-sleeved shirt and a pair of trousers or a *Baju Cara Melayu*. On some occasions, a long blouse (knee-length) called *Baju Gamis* was also worn as an alternative. This costume, complete with a *tengkolok* (head cloth made of voile *kain kasa*), was worn by the groom on the third day of the wedding ceremony, called 'Muleh Tiga Hari' (literally means the day when the bride and groom return to the groom's family after a three-day stay with the bride's family). The *Baju Jubah* was made of silk and cotton or purely cotton, and for some ritual reasons bright colours were preferable; while the *Gamis* was either made of poly-

During a Malay wedding ceremony, the Malay male guests normally wear the *Baju Cara Melayu* with a *songkok* (a *kopiah* for the *Haji*) while the Malay female guests wear *Baju Kurong* or *Kebaya* complete with a scarf (*tudong*). It can be of any colour. The female *Baju Kurong* is usually made of silk fabric embroidered with floral motifs.

Today, women of all ethnic groups in Brunei



P17 : *Baju Kedayan*

normally wear *Baju Kurong* or *Baju Kebaya* to go to school, offices and markets.

Other Indigenous Ethnic Attire

Ethnic costumes are very traditional and rigid in form. They are usually made of indigenous or low quality materials, and consequently are not very marketable and have come to be replaced by factory-made clothing. There are now mainly used during a few special occasions like festivals, weddings and staged cultural performances.



P18 : *Baju Dusun*

Baju Kedayan

The Kedayan are one of Brunei's indigenous ethnic groups, and the *Baju Kedayan* [see P16] is a long-sleeved blouse made from plain black cotton for its women. This blouse, also known as *Baju Bekubamban Butang Enam*, has sleeves that are adorned with hollowed silver buttons filled with small pellets that jingle when the arms are moved, and is worn over a black cotton *Kain* or *sarong* and worn with a *tudong* (a scarf). The male version of *Baju Kedayan* [see P17] comprises a long-sleeved and collarless cotton shirt, usually black in colour, and worn with a black tight-fitting cotton pair of trousers which extended past the knees but above the ankles, and complete with a *daster* as a headgear. Today, this attire is rarely seen or worn except during ceremonial functions.

Baju Dusun

The *Baju Dusun* [see P18] is named after the ethnic group that wears it (the Dusun), and consists of a long-sleeved, hip-length blouse and an ankle-length *kain* or knee-length skirt. It is made of black plain velvet or sometimes embroidered with flowery patterns. This attire was

originally be a common dress for Dusun women but now is rarely worn except by the Dusun priestess (*Balian*) during a ritual rite called *Tamarok*, or by Dusun ladies in cultural stage performances.

Conclusion

There is a greater variety of clothing in Brunei now than ever before. Besides the traditional forms, many Bruneians have been exposed to other styles of dressing while they are studying or travelling abroad. For those who stay at home, movies, television, magazines, and newspapers introduce and reinforce the latest fashion trends from overseas. Compared to earlier times, Bruneians also now have a more disposable income available to increase both the variety and quality of their wardrobes. Moreover, the prevalence of air-conditioning in the home and the workplace means that Bruneians can choose to wear fabrics which would otherwise be more suited for cooler climates.

It would appear that the foreign influences on clothing styles has had a greater impact in the clothes worn for everyday activities. Younger Bruneians prefer casual shirts and T-shirts with Jeans (and a *tudong* in the case of Muslim women) because such informal clothes are convenient and practical. Today, convenience seems to be essential. Nevertheless, clothes worn for special cultural and religious occasions have changed very little. Bruneians continue to be quite traditional when it comes to their cultural and religious activities, as evidenced by the Malay wedding costumes today which are much the same as those of generations past.

Bibliography

- Anon. 1985. Songkok. *Muhibbah: Inflight Magazine of Royal Brunei Airlines*, Vol 4 No. 5. Royal Brunei Airlines, Bandar Seri Begawan
- Anon. 1988. *Brunei Darussalam Cultural Heritage: An Introduction the Exhibition of Photographs on Cultural Heritage of ASEAN*. Organized by ASEAN Committee on Culture and Information, Brunei Darussalam. Published by Brunei Museum.

- Anon. 1995. Profile: Celebration of His Majesty's 49th. Birthday. *Regal* Vol. 2 Issue 4. Graham and Graham (s) Pte. LTD.
- Archjadi. J. 1981. Indonesian Women's Costumes. Djambatan, Jakarta.
- Dra. Suwati Kartiwa. 1991. Introducing ASEAN Traditional Dresses Projek Pembinaan Muzium Nasional Indonesia Jakarta.
- Brown D. E. 1974. Antonio Pigafetta's Account of Brunei in 1521. *The Brunei Museum Journal* Vol. No 3: 171-129. Bandar Seri Begawan.
- DK. Fatimah Pg. Mohammad. 1993. A kain Tenunan for a Special Occasion. *Muhibbah* May/Jun 1993. Bandar Seri Begawan.
- Kathrine Sim. 1963. Costume of Malaysia. Eastern Universities Press Ltd. Singapore.
- Marryat F. S. 1848. Borneo and the Indian Archipelago With Drawings of Costume Scenery. London: Longman Brown, Green and Longman Patternoster Row.
- Masnah Amit. 1989. Perusahaan Tenunan Di Brunei. *Berita Muzium* Jilid 11 Bil. 1: 33-51. Musium Brunei. Bandar Seri Begawan.
- Nicholl R. 1975. European Sources For the History of the Sultanate of Brunei in Sixteenth Century. *Muzium Brunei*. Bandar Seri Begawan.
- Ong E. 1991. Sarawak Costumes. In *Sarawak Cultural Legacy A Living Tradition*: 107-117. Society Atelier, Sarawak.
- P. M. Shariffuddin, P. S. B., AMA. 1970. Some problems of Getting Materials for Brunei Museum. *Brunei Museum Journal* Vol. No. 2: 1-6. Bandar Seri Begawan.
- Rosmin Darus. 1995. Kebaya Kurong Tetap Menawan. *Berita Harian/Sabtu*, 10 Jun 1995: 22. Kuala Lumpur.
- Sellator B. 1984. Hornbill and Dragon. *ELF Aquitqine* Indonesie.
- Wade G. P. 1987. Borneo-Related Illustrations In a Chinese Work. *Brunei Museum Journal* Vol. No. 6: 1-3. Bandar Seri Begawan.
- Zahari Ampuan Hj. Sadikin, Bantong, Hajah Raya. 1993. Indigenous Art of Brunei: An Overview. In *Saling Lahat Saling Tanggap*. A Report on the ASEAN Conference and Workshop Research, Documentation And Exchange on Indigenous Art Materials ASEAN-COCI, Manila Phillipines.
- Zubaidah Sual. 1990. Malaysian Traditional Costumes Exhibition. *Muzium Negara*, Kuala Lumpur.

The Writer

Bantong bin Antaran is the Curator of Ethnography at the Brunei Museums Department. He received his B.Sc (Hons.) degree in Sociology from Portsmouth Polytechnic, England (1983), and Master of Philosophy in Southeast Asian Studies from Hull University, England (1993). His interest is on tradition and cultural change among the indigenous peoples of Brunei Darussalam, and he has published various articles on the local culture of Brunei. The above article is an edited version of a paper he presented at the Seminar on Ethnoarchaeology of Southeast Asian Textiles (August 8-15, 2000 Bangkok, Thailand).

Italian Ambassador's Visit to SPAFA

28th May 2001



His Excellency Mr. Stefano Starece Janfolla, Ambassador Extraordinary and Plenipotentiary of Italy



Mr. Paolo Piazzardi, cultural affairs attaché of the Embassy of Italy in Bangkok

His Excellency Mr. Stefano Starece Janfolla, Ambassador Extraordinary and Plenipotentiary of Italy, visited the Regional Centre for Archaeology and Fine Arts (SEAMEO-SPAFA) on the 28th of May 2001. He was accompanied by Mr. Paolo Piazzardi, cultural affairs attaché of the Embassy of Italy in Bangkok. During a meeting with the centre staff, the Ambassador said that he has been very interested in the cultural affairs of the East, even before leaving Rome to assume his post in Thailand. His Excellency related that he wanted to document the initiatives taken in the field, and he called for more facilitation of scholars to visit Thailand, and assist in conservation projects; as well as for scholars in the region to go to Italy and do likewise. "I am very pleased to learn of the involvement of Pisit (SPAFA Centre Director) in enhancing the value of rock art", he added.

Mr Pisit Charoenwongsa, Centre Director, presented an overview of SPAFA and its work; followed by a discussion. The Ambassador expressed his view that "efforts in area of art and

culture are not only useful in terms of attracting visitors - and therefore have economic benefits - but represent the very soul of what we are as people. It is thus a worthy endeavour." He also made enquiries relating to the conditions of associate membership, and expressed his wishes for Italy to become an associate country to SEAMEO. Following that, His Excellency asked about the centres funding sources (a SPAFA proposal of co-operation on conservation with the Embassy and Government of Italy was later presented to the Ambassador).

After a tour of the facilities of the Centre, His Excellency Mr. Stefano Starece Janfolla bid farewell, saying: "I leave here with the best wishes for you in your efforts and activities in the worthy cause ...," adding that, "we should remain sensitive to the value of art and culture, and on the way they should be preserved. Thank you again for inviting me here this morning. It has been a real pleasure to get acquainted with the SPAFA staff and with an outline of your activities."



5 April 2001

Leiden, The Netherlands

IIAS Film presentation 'Told in Heaven to Become Stories on Earth'.
A study of change in Randai theatre of the Minangkabau in West Sumatra using visual documentation from the 1930's. IIAS Contact address:
Dr W. van Zanten
E-mail: zanten@fsw.leidenuniv.nl

11-12 May 2001

Leiden, The Netherlands

Changing the Guard, Guarding the Past: Oral histories of the end of colonialism and the birth of new nations in Asia

Organizer: the Foundation for the Oral History of Indonesia (Stichting Mondelinge Geschiedenis Indonesie, SMGI)

Conference Secretariat: Dr Fridus Steijlen, SMGI, c/o Royal Institute for Anthropology and Linguistics (KITLV),
P.O. Box 9515, 2300 RA Leiden, The Netherlands
Tel: +31-71-527-2639
Fax: +31-71-527-2638
E-mail: smgi@kitlv.nl

6-10 June 2001

Amsterdam, The Netherlands
12th Beeld voor Beeld Festival (Picture for Picture Festival).

Film, Video and Photography Festival with special emphasis on Asia.

Theme: 'Misunderstanding'
Contact address: Natascha Bregstein
Tel./Fax: +31-20-620-1368
E-mail: beeldvoorbeeld@savan.nl
Http://www.beeldvoorbeeld.com

7-9 June 2001

Montreal, Canada

International Conference on the 'Mahabharatha'

Organized by the Chair of Hindu Studies, Concordia University
Dr. Shrinivas Tilak, Department of

Religion, Concordia University
1455 de Maisonneuve, Blvd.
W. Montreal, Quebec, Canada
H3G 1M8

Frank Morales
Tel: +1-608-288-0266 (home)
E-mail: fmorale@students.wise.uni
Http://www.dharmacentral.com

2-3 July 2001

London, United Kingdom

**Maritime Empires:
The operation and impact of nineteenth century British imperial trade**

Helen Jones, Research Administrator, National Maritime Museum, Greenwich, London SE 109 NE United Kingdom
Tel: +44-20-8312-6716
Fax: +44-20-8312-6722
E-mail: research@nmm.ac.uk
Http://www.nmm.ac.uk
Deadline for abstracts:
1 January 2001

9-12 August 2001

Berlin, Germany

Second International Convention of Asia Scholars (ICAS 2)

ICAS2 organizing unit:
Prof. Dr Eberhard Sandschneider, Arbeitsstelle Politik Chinas und Ostasiens, Freie Universität Berlin, Ihnestr. 22 D-14195 Berlin, Germany
E-mail: sandschn@zedat.fu-berlin.de

2-3 August 2001

Leiden, The Netherlands

International workshop 'The impact of new roads on urban and regional development in Southeast Asia; anthropological and historical perspectives'

Freek Colombijn, International Institute for Asian Studies, PO Box 9515, 2300 RA Leiden, The Netherlands
Fax: +31-71-527-4162
E-mail: colombijn@let.leidenuniv.nl

6-8 August 2001

Kuala Lumpur, Malaysia

3rd International Malaysian Studies Conference (MSC3)

Organizer: Malaysian Social Science Association (MSSA)
Mr Foo Ah Hiang, Institute of Postgraduate Studies and Research, University of Malaya, 50603 Kuala Lumpur, Malaysia
Tel: +6-03-7959-3606
Fax: +6-03-7956-7252
E-mail: hifoo@umcsd.um.edu.my
Http://www.phuakl.tripod.com/pssm/homepage.htm

30 August-1 September 2001

Amsterdam, The Netherlands

People and the Sea: Maritime Research

In the social sciences-an agenda for the 21st century, Inaugural conference for the Center for Maritime Research
Center for Maritime Research (MARE), Plantage Muidergracht 4 1018 TV Amsterdam The Netherlands
Tel: +31-20-527-0661
Fax: +31-20-622-9430
E-mail: mare@siswo.uva.nl
Http://www.siswo.uva.nl/mare

5 September 2001

Singapore

Asian Diasporas and Cultures: Globalization, Hybridity, Intertextuality

Dr. Robbie Goh, Department of English Language and Literature, National University of Singapore, Block AS5, 7
Arts Link, Singapore 117570
Fax: +65-773-2981
E-mail: ellgohbh@nus.edu.sg

6-8 September 2001

London, United Kingdom

3rd EUROSEAS Conference

Ms Hilga Prins, Management Assistant, EUROSEAS Secretarian, C/O KITLV, P.O. Box 9515, 2300 RA

conferences

Leiden, The Netherlands
Tel: +31-71-527-2639
Fax: +31-71-527-2638
E-mail: euroseas@rullet.leidenuniv.nl
Deadline for abstracts:
28 February 2000

EUROSEAS Conference, London

As a sequel to the most successful conferences in Leiden (1995) and Hamburg (1998), EUROSEAS is very pleased to announce that it is preparing the third EUROSEAS Conference which will be held in London, from Thursday 6 September to Saturday 8 September 2001. The Conference will be hosted by the Association for South-East Asian Studies United Kingdom (ASEASUK) in co-operation with the School for Oriental and African Studies (SOAS) and The University of North London (UNL).

The actual conference will open on the morning of Thursday 6 September with a public opening session during which leading scholars and officials will share their views on current themes with regard to Southeast Asia. On Thursday afternoon the actual panel sessions will start. On Friday and Saturday plenary panel sessions will be held in addition to the 'ordinary' panels. Themes for these plenary sessions will be selected from the 'ordinary' panels.

All through the conference there will be ample occasion for social interactions with other conference participants after panel sessions during specially organised social events and in the numerous local establishments.

Some of the panel topics are as follow :

- Centre and Periphery in Southeast Asia
- History of Food-crop Production,

Animal Husbandry, and Fisheries in Southeast Asia

- Interaction of Political and Economic Change in Southeast Asia in the Twentieth Century
- Leadership and the Culture of Reform in Southeast Asia
- Management and Business Culture in Southeast Asia
- Media and Literature
- Ritual, Pain, and the Religious Body in Southeast Asia
- Social Security in Southeast Asia
- South China Sea
- Tourism and Heritage in Southeast Asia

Because of its great success during the Hamburg Conference in 1995, there will be a Young Scholars' Panel at our 2001 Conference in London as well. In this panel, promising young scholars will have the opportunity to present a paper on their research project and have a chance to discuss their work with other scholars in their field of interest. The organisers are looking for enthusiastic scholars who are willing to chair the Young Scholars' Panel.

If you are a scholar specializing in the Southeast Asia region and are interested in organizing a panel at our conference in London, you are invited to submit a panel proposal. Please use no more than 100-300 words to state clearly what the content, focus, and objective of your panel will be. Should receive your proposal before September 1, 2000. If you have any questions, please don't hesitate to contact the EUROSEAS Secretariat.

<curoseas@rullet.leidenuniv.nl>

**By John Kleinen, Peter Post,
& Remco Raben**

14-15 February 2002

Singapore

The 60th Anniversary of this Major Event of the Second World War Sixty Years On

The Fall of Singapore Revisited:
A Conference to Commemorate
Organizer: Department of History,
National University of Singapore,
Dr Brian P. Farrel, 10 Kent Ridge
Crescent, Singapore 119260

Fax: +65-774-2528

E-mail: hisbpf@nus.edu.sg

Deadline for submissions:

15 August 2001

ANGKOR OBSERVED



DAWN ROONEY



ORCHID GUIDES

ANGKOR OBSERVED

by DAWN ROONEY

This is the second book in the series **THERE BEFORE YOU**. It consists of a selection of early travellers' impressions of the Khmer empire's ancient, 12th century capital and the legends that inspired the majestic stone temples of Angkor which were described by a visitor in the 1920s as "the most impressive sight in the world of edifices".

The work brings to the reader out-of-print impression of early western travellers, and also includes tales and legends based on an oral tradition, published for the first time. It serves as a guide-book companion, as an introduction to Angkor and as

supplementary reading following a visit. It is also of interest to the armchair traveller unable to venture as far afield as Cambodia.

The author has a PhD in art history, and has written several books on Southeast Asian art and culture, including *Angkor. An Introduction to the Temples* (1994).

*"Go to Angkor, my friend,
to its ruins and its dreams."*

P. Jeannerat de Beerski, 1923.

Approximately 260 pp., richly illustrated, maps, bibliography index.

Please supply the following book(s):

Qty	Title	Price	Total
	Angkor Observed (ISBN 974-8304-79-5)	US\$ 23.00	
	Add postage, packing and handling (add 15% of value, min. \$9).		
	Total amount \$		

☐ Check Enclosed

Name _____

Address

Postal Code _____

City _____ Country _____

Postal Code _____ City _____ Country _____
☒ **ASA: ORCHID PRESS, P.O. Box 19, Yuthitham Post Office, Bangkok 10907,**

Thailand Fax: +662 930 5646 E-mail: wop@inet.co.th

✉ North America: 4840 Acorn Street, Montreal H4C 1L6, Canada. Fax (514) 934 6043

✉ Europe: P O Box 5259 Maj., N-0303 Oslo, Norway. Fax +47 22 56 57 66

DICTIONARY OF SOUTH & SOUTHEAST ASIAN ART

Gwyneth Chaturachinda
Suranda Krishnamurty
Pauline W. Tabtiang

Who is Avalokitesvara?
Where is the Golden Temple?
What is a dharmachakra?
What kind of creature is the Garuda?
Of what significance is the naga?
What is a zari?



This basic dictionary of South and Southeast Asian art offers clear and concise explanations of all these terms and hundreds more. With over 700 entries, 78 line illustrations, and 15 colour photographs, this little volume makes a handy reference for anyone interested and engaged in South and Southeast Asia - travellers and residents, new students in the field, museum goers, and general readers. Explanations are succinct and easy to understand. Entries range from terms encountered in South and Southeast Asian history, religion, mythology, and literature, to those specific to art and architecture. Words are drawn from the diverse religious traditions of the region, including Buddhism, Hinduism, Islam, Jainism, Sikhism, and

Taoism, and from the countries of the region, including Burma, Cambodia, India, Indonesia, Laos, Sri Lanka, Thailand, and Vietnam.

From abhayamudra through ziarat, this is an essential dictionary for anyone stepping into the fascinating world of South and Southeast Asian art.

Published in 2000 by
Silkworm Books
Suriwong Book Centre Building
54/1 Sridon Chai Road, Chiang Mai 50100
Thailand.

E-mail : silkworm@pobox.com
Website : www.silkwormbooks.com



9 weeks 12 cities 41 dancers and musicians

Dance, the Spirit of Cambodia, a project of the Royal University of Fine Arts, Phnom Penh will present classical and folk dance and music from Cambodia during a 12-city national tour August 11–September 29, 2001. This coast-to-coast trip by the 41-member troupe marks the first time in more than a decade that the living traditions of Cambodian music and dance have formally toured in the U.S.A..

Performance Calendar

National Press Releasepress.htm

Repertory for the scheduled 28 public performances on tour will include dance and music from Cambodia's folk and classical traditions and an extended excerpt from the Reamker dance-drama.

Repertory

A project of the Royal University of Fine Arts in Phnom Penh, the project's Artistic Director is Proeung Chhieng, Vice Rector and Dean, Choreographic Arts.

The Artists

This project, initiated and produced by the *New England Foundation for the Arts (NEFA)* in partnership with *Asia Society* and *Lisa Booth Management, Inc.*, is a public celebration of more than a decade of documentation, preservation and cultural exchange fostered between the Royal University of Fine Arts, US presenters, funders, and Cambodian-American communities.

Asian Art at the Venice Biennale 2001 July 05, 2001

The Venice Biennale, running from June 10 to November 4 this year, is the oldest and most prestigious international exhibition of contemporary art in

the world. This year Asian and Pacific Islander artists are making a big splash at the show, exhibiting some of the most innovative works and receiving a great deal of media attention and critical acclaim.

In the Japanese pavilion, Masato Nakamura's towering installation of golden arches has been consistently called one of the best works of the year, while Chinese artist Xiao Yu and Taiwanese photographer Chang



Chien-Chi have raised a great deal of controversy with their explorations of what the BBC calls "the darker sides of their societies." Also of note, two Korean American artists, Michael Joo and Do-Ho Suh, are representing Korea in the Biennale with intriguing sculptural installations that explore the concept of cultural hybridization and the relationship between individual identity and the larger society.

This year also marks the first year New Zealand and Hong Kong are participating in the Biennale. Entitled "Bi-polar," New Zealand's entry features the work of Peter Robinson and Jacqueline Fraser, two artists of Maori descent who take different approaches to dislocation and identity in their work. Hong Kong, which is trying to establish

itself as a center for contemporary art, is showcasing "Magic at Street Level," an exploration of Hong Kong's urban landscape.

Asia's prolific participation in this year's Venice Biennale is a sure sign of the region's full entry into the international contemporary art scene. Access a comprehensive collection of articles, information on participating artists, and links with this special report.

Articles

At the Biennale, the Art's All Over the Map (July 1, 2001)
Though not specifically about Asian art, this column by Christine Temin of The Boston Globe touches on the global nature of the Biennale and posits that "the overall concept of this 49th Venice Biennale is as murky as a canal overdue for dredging."

AUSTRIA

Museum for the Blind

Brussel
Tel. +32-2-741 7211

Museum fur Volkerkunde Wien

Vienna I
Tel. +43-1-534-300

Museum of the History of Art

Vienna
Tel. +43-1-5277301

Permanent collection
Egyptian and Oriental collection, paintings, coins, and antiquities.

Quadrivium

Sydney
Tel. + 61-2-9264 8222

SchloBmuseum

Linz
Tel. +43-732-7744-19



Wiener Secession
Vienna
Tel. +43-1-5875307

AUSTRALIA

Annandale Galleries
ANNANDALE
Tel: (61-2) 9552 1699
Annangal@ozemail.com.au

The Art Gallery of New South Wales
Sydney
Tel. +61-2-92251846



Chalood Nimsamer, Songkran (oil) 1956

Art Gallery of South Australia
ADELAIDE
Tel: (61-8) 8207 7000

Art Gallery of Western Australia
PERTH
Tel: (61-8) 9492 6600
Email: admin@artgallery.wa.gov.au
www.artgallery.wa.gov.au

Features treasures from the State Art Collection, including Australian landscapes, paintings, sculpture, ceramics, glass, textiles and jewellery, an aboriginal Gallery and an array of 18th, 19th and 20th century Western Australia, Australian and international art and travelling exhibitions.
Daily 10-5, Admission free

Cairns Regional Gallery
CAIRNS
Tel: (61-7) 4031 6865
Email: frnqall@internetnorth.com.au

Campbelltown City Bicentennial Art Gallery
CAMPBELLTOWN
Artgallery@campbelltown.nsw.gov.au

Casula Powerhouse Arts Centre
CASULA
Tel: (61-2) 9824 1121
Email: caspower@mail.flex.com.au
www.sydneysydneyarts.net

Dacou Aboriginal Gallery
Salisbury Plain
Tel: (61-8) 8258 8610
Email: dacou@dacou.com.au
www.dacou.com.au
Specialising in a large range of aboriginal fine art from the Utopia region. Artists include Barbara Weir, Gloria Petyarre, Anna Petyarre, Greeny Petyarre and Emily Kame Kngwarreye. Specialists in providing a selection of Utopia art to exhibition galleries. All enquiries to Fred Torres or Paulette Watts.
By appointment

East & West Art Gallery
Victoria 3102
Tel: (61-3) 9859 6277
East & West Art Gallery specialises in exhibiting Asia and Australian contemporary fine art and Asian antiques.
Monday to Friday 10-5.30,
Saturday 10-3

Fire-Works Gallery
Qld
Tel: (61-7) 3216 1250
Email: fireworks@fireworksgallery.com.au

Gallery 4A
Sydney
Tel./Fax: (61-2) 9281 1750
Email: gallery4A@one.net.au

Gold Coast City Arts Gallery
Qld
Tel. +61-7-5581 6500

Gould Galleries, Sydney
WOOLLAHRA
Tel: (61-2) 9328 9222

Gould Galleries, Melbourne
Tel: (61-3) 9827 8482
Gould Galleries, Sydney
Tel: (61-2) 9328 9222
Australian colonial, impressionist, modern, contemporary and aboriginal art and sculpture. Services provided include valuation, restoration, financial arrangements and advice on the formation of private and/or corporate collections.
Tuesday to Friday 11-6,
Saturday 11-5, Sunday 2-5

Griffith Artworks
QLD
Tel: (61-7) 3875 7414
Artworks@gu.edu.au
www.gu.edu.au/uls/gart/artworks

Indigenart - The Mossenon Galleries
SUBIACO
Tel: (61-8) 9388 2899
FREMANTLE
Tel: (61-8) 9335 2911

Institute of Modern Art (Ima)
QLD
Tel: (61-7) 3252 5072
Im@ima.org.au

Ivan Dougherty Gallery
PADDINGTON
Tel: (61-2) 9385 0726
Ivan Dougherty Gallery is a major contemporary art exhibiting space and educational resource of The University of New South Wales College of Fine Arts. Approximately ten exhibitions per year, focusing on 20th-century contemporary Australian



and international art in all disciplines.
Monday to Friday 10-5, Saturday 1-5,
Closed public holidays

James Harvey Gallery

Balmain

Tel./Fax. (61-2) 9810 8742

From 2000 the gallery will specialise in contemporary art from Asia, with a particular, but not exclusive, interest in art in all media from India, Sri Lanka and Indonesia. Currently inviting exhibition proposals.

Wednesday to Saturday 12-5

Ken Done Gallery

The Rocks

Tel. (61-2) 9247 2740

A vibrant and exciting space in Sydney's Rocks Precinct where the exhibitions explore key themes that Australian artist Ken Done delights in working with – Sydney Harbour, the beach, reef and Outback.

Daily 10-5.30

Monash University Gallery

CLAYTON

Tel. (61-3) 9905 4217

www.monash.edu.au/mongall/monash.html

Multimedia Art Asia Pacific (Maap)

WOOLLOONGABBA QLD

Tel: (61-7) 3391 3569

Info@maap.org.au

www.maap.org.au

National Gallery of Victoria

Victoria

Tel. +61-3-9208-0222

Permanent Collection

The Asian Gallery will feature major treasures from the National Gallery of Victoria's permanent collection.

This display will focus on Chinese ceramics and archaic bronzes, plus Hindu and Buddhist art from India, the Himalayan region, China and Japan.

Pacific Artspace, Victoria

Tel. (61-3) 9486 9702

Email: pacific_art@hotmail.com

'pacific_artspace' promotes and sells contemporary pacific art.

'pacific_artspace' represents Pacific artists including Filipe Tohi, Fatu Feu'u, Dagmar Dyck, John Ioane, Lily Laita, Nicky Hastings McFall And Ian George. By appointment

Powerhouse Museum

ULTIMO

Tel. (61-2) 9217 0100

The Powerhouse museum is Australia's largest and most popular museum.

The extraordinary breadth and diversity of the Powerhouse collection provides a unique experience for visitors. Collections include space, technology, decorative arts and design, fashion, transport, science, music, social history, manufacturing, information technology, cultural diversity and lots more.

Daily 10-5, closed Christmas Day

Quadrivium

Sydney

Tel. +61-2-9264-8222

Quadrivium exhibits a range of traditional Asian Art from South Asia, Southeast Asia and East Asia. Fine religious and traditional sculpture in stone and bronze including Buddha's and Chinese Han Dynasty figures are featured.

Queensland Art Gallery

South Brisbane

Tel. +61-7-38407333

Permanent Collection

The Kenneth and Yasuko Myer Collection of **Contemporary Asian Art** has some outstanding pieces of Asian art.

Roslyn Oxley9 Gallery

PADDINGTON

Tel. (61-2) 9331 1919

Roslyn Oxley9 Gallery exhibits contemporary Australian and international art.

Tuesday to Friday 10-6, Saturday 11-6

School of Contemporary Arts

KINGSWOOD

Tel: (61-2) 9852 5520

Info@uws.edu.au

www.neoean.uws.edu.au/arts

Sherman Galleries

PADDINGTON

Tel. (61-2) 9331 1112

Email: shermans@ozemail.com.au

www.shermangalleries.com.au

BELGIUM

Ethnographic Museum

Antwerp

Tel: +32-3-2208600

Email: etnografisch.museum@antwerpen.be

Hessenhuis

Antwerp

Tel. +32-3-2060350

Email: hessenhuis@antwerpen.be

Internet: <http://www.DMA.be/cultuur/hessenhuis>

Royal Museums for Art and History

Brussels

Tel. +32-2-7417214

Royal Museums of Art and History

- Brussels

Brussels

Tel. +32-2-7417211

Permanent exhibition

Important **collections** regarding China, Korea, India and Southeast Asia.

CANADA

Art Beatus Gallery

VANCOUVER

Tel. (1-604) 688 2633

Email: info@artbeatus.com

www.artbeatus.com

Art Beatus, established in Hong Kong in 1992 and in Vancouver, Canada, in 1996, promotes international contemporary art, with a special focus on Asian art.

Tuesday to Saturday 10-6,
or by appointment



China Archives and Warehouse
Beijing, 100006
Tel: +86-10-6760-5364
E-mail: naac@public.gb.com.cn
Http://www.archivesandwarehouse.com

Courtyard Gallery
Beijing
Tel. (86-10) 6526 8882/81
Email: courtart@cinet.com.cn
www.courtyard-gallery.com

Cultural Exhibition Centre
Shandong Province
Tel. +86-532-287 0473

Red Gate Gallery Beijing
Tel. +86-10-65251005
redgate@eastnet.com.cn
www.redgategallery.com

Shanghart
SHANGHAI
Tel: (86-21) 6359 3923
Shangart@uninet.com.cn
www.shanghart.com

Shanghai Art Museum
Shanghai

FRANCE

Galerie Loft
PARIS
Tel. (33-1) 46 33 1890

Galerie Nationale du Jeu Paume
Paris
Tel. +33-1-47031250

Le Consortium
Based in the city of Dijon this gallery presents many solo exhibitions of artists from Asia. Recent exhibitions at the gallery showcased works by the Chinese born artist Wang Du, who's work was also exhibited at the 1999 Venice Biennial, and Yayoi Kusama from Japan, presenting a series of ten monumental installations at the exhibition hall.

Musee Cernuschi
Paris
Tel. +33-1-45635075

Musee Guimet
Paris
Tel. +33-1-47238398

Permanent collection
Fine art and archaeology from non-Western areas.

Museum of Fine Art and Archaeology
Besancon
Tel. +33-81-814447

Myrna Myers
Paris
Tel: +33-1-4261-1108
E-mail: mmyersgal@aol.com

Le Consortium
E-mail: consortium@planetb.fr
Http://www.leconsortium.com

GERMANY

Brohan Museum
Berlin
Tel. +49-30-3214029

China Gallery
Schwanstetten
Tel. +49-91-1-707-454

A permanent display of the work of Liu Shao Hui (1940), modern painter and designer. Liu Shao Hui is one of the founders of the Yunnan School of Modern Heavy Colour Painting and of the Guilin School of Qigong originated painting.

The Fine Art Resource
Berlin
Tel. (49-30) 3270 4000
Email: ranjana.Steinruecke@t-online.de
Exhibiting contemporary art from India.

Artists include Arpana Caur, Jogen Chowdhury, Atul Dodiya, Bhupen Khakhar, Nalini Malani and Nilima Sheikh.
Tuesday to Friday 2-7, and by appointment

Herzog August Bibliothek
Wolfenbuttel
Tel. + 49-5331-808 0213

Linden Museum
Stuttgart
Tel. +49-711-123 1242

Museum fur Kunsthandwerk
Frankfurt am Main
Tel. + 49-69-212-34037

Museum fur Ostasiatische Kunst
Berlin (Dahlem)
Tel. +49-30-8301383/83011

Museum fur Volkerkunde Hamburg
Hamburg
Tel. +49-40-44195524

Museum of Ethnology
Berlin
Tel. +49-30-83011
Permanent Collection
Studies of the cultures of the Pacific Islands, Africa, America and Southeast Asia.

Museum of Indian Art
Berlin
Tel. +49-30-8301-361
Permanent Collection

Archaeological objects from India; terracotta, stone sculptures and bronzes from India, the Himalayan countries and Southeast Asia; miniature paintings.

Rautenstrauch-Joest Museum
Cologne
Tel. +49-221-3369413



Städtisch Kunsthalle
Mannheim
Tel. +49-621-2936413

GREAT BRITAIN

Art Sales Index Limited
Surrey
Tel. (44-1344) 841 750
www.art-sales-index.com
Established in 1968, Art Sales Index has over two million entries of fine art available in print, CD-Rom or online.

Ashmolean Museum
Oxford
Tel. +44-1865-278009110

British Library
London
Tel: +44-171-4127111

British Museum
London
Tel. +44-171-6361555

Permanent collection
Antiques from Egypt, Western Asia, Greece and Rome. Medieval, Renaissance, Modern and **Oriental collection**, prints, drawings coins and medals.

British Museum and Museum of Mankind
London
Tel. +44-171-412-7111

Permanent Collection
Antiques from Egypt, Western Asia, Greece and Rome, as well as prehistoric and British art, Medieval, Renaissance, Modern and Oriental collection, prints, drawings, coins and medals.

Brunei Gallery
London
Tel. + 44-171-323 6230
E-mail: gallery@soas.ac.uk

The Burrell Collection
Glasgow
Tel. +44-41-6497151

Permanent collection
Art objects from the ancient civilizations of Iraq, Egypt, Greece, Italy, the Orient and from Medieval Europe.

Cheltenham Gallery and Museum
Cheltenham
Tel. + 44-1242-237 431

China Archives and Warehouse
E-mail: naac@public.gb.com.cn
[Http://www.archivesandwarehouse.com](http://www.archivesandwarehouse.com)

Chinese Arts Centre
Manchester
Tel. + 44-161-832-7271

Chinese Contemporary Gallery
London
Tel. + 44-171-498 898

Fitzwilliam Museum
Cambridge
Tel. +44-1133-332906

InIVA
London
Tel: +44-20-7729-9616

Institute of Contemporary Arts (ICA)
London
Tel. (44-171) 930 0493
Email: info@ica.org.uk
Exhibiting contemporary art from around the world, including Asia.

Institute of International Visual Arts
London
Tel. (44-171) 636 1930

Laing Art Gallery
Newcastle upon Tyne
URL : www.the-people.org

Marlborough Fine Art
London
Tel. (44-171) 629 5161

Museum of East Asian Art
Bath
Tel. +44-1225-464640

Museum of Modern Art
Oxford
Tel. (44-186) 572 2733
Exhibiting contemporary art from around the World, including Asia. Tuesday to Saturday 10-6, Thursday 10-9, Sunday 2-6

Pacifica Imports and Exhibitions Limited
London
Tel. (44-171) 402 6717
Email: luveigh@aol.com
Dealers and suppliers of traditional tribal and contemporary art from Southeast Asia, the Pacific Rim and Polynesia.
International exhibition organisers and art dealers.

Partridge Fine Arts
London

Percival David Foundation of Chinese Art
London
Tel. +44-171-3873909

Red Gate Gallery/The Watchtower
E-mail: redgate@eastnet.com.cn
[Http://www.redgategallery.com](http://www.redgategallery.com)
Tate Modern
[Http://www.tate.org.uk/modern](http://www.tate.org.uk/modern)

Victoria & Albert Museum
London
Tel. +44-171-9388500

HONG KONG

Alisan Fine Arts – Alice King Gallery
Tel. (852) 2526 1091
Email: alisan@netvigator.com
Alisan Fine Arts is one of the oldest art galleries in Hong Kong. It holds regular



exhibitions and offers an art consultancy service for corporations and individuals seeking to collect contemporary Chinese art. With over 2000 paintings in stock and 18 years experience, Alisan

by leading artists with their own statements about their work and essays by leading art critics. Monday to Saturday 10.30-6.30, Sundays by appointment



Fine Arts is able to serve the most discerning collector and novice alike. Monday to Friday 10-6, Saturday 11-6

Art Beatus Gallery

Tel. (852) 2526 0818
Email: info@artbeatus.com
www.artbeatus.com

Art Beatus, established in Hong Kong in 1992 and in Vancouver, Canada, in 1996, promotes international contemporary art, with a specific focus on contemporary Chinese art. Monday to Friday 10-6, Saturday 10-1, or by appointment

Artpreciation

Tel. (852) 2868 0077
Representing Cheung Yee, Koo Mei, Emily Wei, Jackson Yu, Zhao Hai Tien, Daniel Lee and others.

Art Scene China

Tel: (852) 2501 0211
Info@artscenechina.com

Galerie La Vong

Tel. (852) 2869 6863/6682
Galerie la Vong specialises in fine contemporary Vietnamese art. Paintings by Vietnam's most outstanding artists are exhibited. The gallery's Book, *Fine Contemporary Vietnamese Art: Towards the Millennium*, includes work

Gallery Loft

Tel: (852) 2803 4248
Jmd@hkstar.com

Hanart Tz

Tel: (852) 2854 1018
Tzchang@hanart.com
www.hanart.com
Hanart TZ Gallery represents contemporary artists from Mainland China, Taiwan and Hong

Kong.
Monday to Friday 10-6.30
Saturday 10-6

Hong Kong Museum of Art Kowloon

Tel. (852) 27210116
E-mail: enquiries@lcsd.gov.hk
Http://www.lcsd.gov.hk

John Batter Gallery

Tel: (852) 2854 1018
Batten@asiaonline.net
www.geocities.com:80/SoHo/Exhibit/3386/index.htm

John Batten Gallery is Hong Kong's only gallery with a regular monthly exhibition schedule showing quality contemporary art from the Asian and Pacific region. The gallery is committed to showing artists who are innovative, committed to showing artists who are innovative, conceptual and intelligent. Contact the gallery for information about the latest exhibitions. Monday to Saturday 11-7, Sunday 1-5 (closed daily 2-3)

Kwai Fung Hin Art Gallery

Tel: (852) 2577 1232
Kfart@netvigator.com and Kfart@kwaifunghin.com
www.kwaifunghin.com
Kwai Fung Hin Art Gallery was established in 1991 and is well known in both Europe and

Asia for its expertise in contemporary fine art. It offers collectable pieces of quality artwork by established artists, as well as showing emerging artists of great talent. Monday to Saturday 9.30-6.30
Sundays by appointment

The Museum Annex

Tel. (852) 2530 9606

Original Gallery

Tel. (852) 2620 0880
Email: original@-wave-net
www.originalgallery.com
Representing the work of Hong Kong-born, Italian-trained artist Marco Szeto. Szeto has a Chinese cultural heritage with a sound western painting technique and a unique 'East meets West' style. Original Gallery also runs a tailor-made painting service. Monday to Friday 10-6, Saturday 10-1, Sundays and public holidays by appointment

Zee Stone Gallery

Tel. (852) 2845 4476
Email: zeestone@netvigator.com
Zee Stone Gallery holds regular exhibitions of contemporary paintings by Chinese artists. Antique Chinese and Tibetan furniture, carpets and silver are also exhibited. Monday to Saturday 10-6.30

INDIA

Archer Art Gallery

AHMEDABAD
Tel. (91-79) 741 3594, 741 3634
Email: archer@archerindia.com
www.archerindia.com
Dealers in contemporary Indian art. Exhibiting graphics, paintings and sculptures by emerging and established artists, including eminent personalities of the Indian art world. Organises and coordinates exhibitions and other art-related activities. Also publishes portfolios and books on Indian contemporary artists. Monday to Saturday 11-7

Cymroza Art Gallery

MUMBAI
Tel. (91-22) 367 1983
www.cymroza.com



The Fine Art Resource

MUMBAI

Tel./Fax. (91-22) 363 1615

Email: fineartresource@vsnl.com

Gallery Chemould

MUMBAI

Tel. (91-22) 283 3640

Changing exhibitions of contemporary Indian art.

Gallery Chemould

Bombay

Tel. +91-22-283-3640

Gallery Chemould devotes itself to promoting contemporary art.

Gallery Espace

NEW DELHI

Tel. (91-11) 683 0499

Email: gespace@del3.vsnl.net.in
www.galleryespace.com

The Window

Mumbai

Tel. +91-22-386 96 28

INDONESIA

Cemara 6, Galeri Kafe

Jalan Cemara 6, Jakarta Pusat 10350

Tel. +62-21-324505

Fax. +62-21-325890

Permanent Collection

Paintings by more than 40

Indonesian painters and a special room featuring the work of the painter Salim, who lives in Paris.

Cemati Gallery, Yogyakarta

Jalan Ngadisuryan 7a, Yogyakarta 55133

Tel. +62-274-371015

Fax. +62-274-371015

Cemati Art House

Jalan DI. Panjaitan 41

Yogyakarta, 55143

Tel./Fax: +62-274-37-1015

E-mail: cemati@indosat.net.id

Gleripadei

Jl. Jr. H. Huanda 329, Bandung 40135

Tel. +62-22-250-0578, Fax. -4229

Tuesday to Sunday 10 am - 20 pm

JAPAN

Base Gallery

TOKYO

Tel. (81-3) 3567 8543

Canon Artlab

Tokyo

Tel: (81-3) 5410 3611

Artlab@crpg.canon.co.jp

Hiroshima City Museum of Contemporary Art

Hiroshima

Tel. +81-82-264-1121

Fukuoka Asian Art Museum

Hakata-Ku, FUKUOKA

Tel. (81-92) 263 1100

faam@faam.city.fukuoka.jp

www.faam.city.fukuoka.jp

Tel. (81-75) 541 1151

welcome@kyohaku.go.jp

www.kyohaku.go.jp

Kyoto National Museum

Kyoto

Museum of Contemporary Art Tokyo

Tokyo

Tel. +48-3-62454111

The history of contemporary art in Japan and other countries after 1945.

The Museum of Modern Art

Kanagawa

Tel. +81-467225000

http://www.c-arts.co.jp/mu/kanagawa.html (Japanese language)

Naasu Royal Museum of Art

Tochigi Prefecture

NTT Intercommunication Center [ICC]

TOKYO

Tel: (81-3) 5353 0800

Query@nttcc.or.jp

www.nttcc.or.jp

Setagaya Art Museum

Tokyo

Tel. +81-3-34156011

Shiraishi Contemporary Art Inc.

TOKYO

Tel. (81-3) 3821 1144

Genpei Akasegawa, Shusaku Arakawa, Toshikatsu Endo, On Kawara, Tatsuo Miyajima, Takashi Murakami, Masato Nakamura, Yoshitomo Nara, Shin Myeong-Eun, Taro Chiezo, Christian Boltanski, Daniel Buren, Richard Deacon, Gunther Forg, Andy Goldsworthy, Jannis Kounellis, Mario Mertz, Cullo Paollini, David Tremlett and Anish Kapoor.

Tokyo Metropolitan Museum of Photography

TOKYO

Tel: (81-3) 3280 0031

www.tokyo-photo-museum.or.jp

Tokyo National Museum of Modern Art

Tokyo

Tel. (81-3) 3214 2561

Housing the largest collection of modern Japanese art.

Tokyo Station gallery

Tokyo

Tel. +81-3-3212 2763

The Tokyo Station Gallery, opened in 1988, is located in the corner of the former Tokyo Station which was constructed in 1913. Aiming to be a small but authentic art gallery, its focus is given to photographs, poster art, architectural design and Japanese modern artists.

The Watari Museum of Contemporary Art

Tokyo

Tel. + 81-3-3402 3001

KOREA

Artsonje Center

SEOUL

Tel. (82-2) 733 8945



Galerie Bhak

SEOUL

Tel. (82-2) 544 8481/2

Galerie Bhak is one of the leading galleries in Korea, specialising in contemporary Korean and international art.

Gallery Hyunai

SEOUL

Tel. (82-2) 734 8125

Exhibiting contemporary Korean art.

Kwangju Biennale

Kwangju

Tel. +82-62-5214627

Email: biennale@bora.dacom.co.kr

Internet: <http://www.kwangjubienale.org>

The National Museum of Contemporary Art

Kyonggi-Do

Tel. (82-2) 503 9674

www.moca.go.kr

Seoul Arts Centre

SEOUL

Tel. (82-2) 580 1611

Cultural centre promoting all aspects of Korean Cultural life.

MALAYSIA

The Art Gallery

368-4-8 Burma Road, Bellisa Row,

Pulau Tikus, Penang 10350

Tel. (60-4) 229 8219

Fax. (60-4) 228 6714

Stocks paintings of pioneer and contemporary Malaysian and Singaporean artists. Exhibits change monthly. Published over 20 books on Malaysian art, including Penang Artists (1990), Social Responsibility in Art Criticism (1998), and Compendium of 30 Malaysian Artists (1999). Tuesday to Sunday 11-6

Balai Seni Maybank

11th Floor Menara Maybank

1100, Jalan Tun Perak,

50050 Kuala Lumpur

Betist & Baltussen Art Consultants

Penang

Tel. (60-12) 438 2032

Fax. (60-4) 226 2310

Email: kimart@mol.net.my

Consultancy for companies and private collections. Specialising in international contemporary art.

Galeri Wan (main gallery)

No. 4 Jalan Binjai

Off Jalan Ampang, 50450

Kuala Lumpur

Tel. +60-3-2614071

Fax. +60-3-2614072

Galeri Wan exhibits various works by contemporary as well as traditional **Malaysian artists**.

Galerie Petronas

1st Floor, Dayabumi Complex

Jalan Sultan Hishamuddin

Kuala Lumpur 50778

Tel. +60-3-2753060/61

Fax. +60-3-2740451

National Art Gallery

1 Jalan Sultan Hishamuddin

Kuala Lumpur 50050

Tel. +60-3-23-15718

Fax. +60-3-23-66

Daily 10 am - 6 pm

NN Gallery

23 Jalan Jati

55100 Kuala Lumpur

Tel. +60-3-243-3630

Fax. +60-3-241-3631

Monday 10 am - 1 pm,

Tuesday to Saturday 10 am - 6 pm,

Sunday 2 - 5 pm

MEXICO

Museo de la Ciudad de Mexico

Mexico City

Tel: +914-5229936

MONGOLIA

Mongolian National Modern Art Gallery

Central Cultural Palace

Ulaanbaatar,

Tel: 976-1-32-7177

E-mail: mnartgallery@mogicnet.mn

[Http://www.mongalart.mn](http://www.mongalart.mn)

THE NETHERLANDS

Betist and Baltussen Art consultants

Tel. (31-6) 5120 9775

Email: nicole.baltussen@wxs.nl

Consultancy for companies and private collections. Specialising in international contemporary art.

Camden Arts Centre

London

Tel: +44-207435243

E-mail: info@camdenartscentre.org

[Http://www.camdenartscentre.org](http://www.camdenartscentre.org)

Centrum Beeldende Kunst

Leiden

Tel. +31-71-516-5369

De Oude Kerk

Amsterdam

Tel. +31-20-625-8284

De Waag

Leiden

Tel. +31-71-514-0580

Foundation for Indian Artists

Amsterdam

Tel. +31-20-6231547

Galerie Amber

Leiden

Tel. +31-71-5149040

Gate Foundation

Amsterdam

Tel. +31-20-6208057

Gemeentemuseum Den Haag

Den Haag

Tel. +31-70-338-1111

Groninger Museum

Groningen

Tel. +31-50-3666555



Hortus Haren
(Groningen)
Tel. +31-50-537-0053
<http://www.hortusharen.nl>

Indonesie Museum Nusantara
HR Delft
Tel. +31-15-2602358

Permanent exhibition on **Indonesian cultures**
Empire of Treasures Nusantara (Schattenrijk Nusantara), a presentation of ceremonial objects, dance masks, etcetera.

Japans Cultureel Centrum
Amsterdam
Tel. +31-20-627-9523

**Kunsthal
Museumpark**
Rotterdam
Tel. +31-10-440 0300

Mu Art Foundation
Eindhoven
Tel. +31-40-296 1663

Museum of Ethnology
Leiden
Tel. +31-71-5168800

Museum of Ethnology Rotterdam
Rotterdam
Tel. +31-10-4111055

Kunsthal 88
AS almelo
Tel. +31-546-852692

Museum The Prinsessehof
Leeuwarden
Tel. +31-58-2127438

Permanent collection
Large exhibition of **ceramics** from China, Japan, India, Vietnam etc.

Paleis Het Loo
Apeldoorn
Tel. +31-55-577-2400
<http://www.hetloo.nl>

Pulchri Studio
Den Haag
Tel. +31-70-346- 1735

Permanent collection
Collections illustrating non-European cultures.

Rijksmuseum
Amsterdam,
Tel +31-20-673-2121

Rijksmuseum
Amsterdam
Amsterdam,
Tel +31-20-674-7000
E-mail: info@rijksmuseum.nl
[Http://www.rijksmuseum.nl](http://www.rijksmuseum.nl)

Rijksmuseum Amsterdam
Stadhouderkade 42
E-mail: info@rijksmuseum.nl
[Http://www.rijksmuseum.nl](http://www.rijksmuseum.nl)
Permanent collection
The new South wing of the museum houses a permanent exhibition of **Asiatic art**.

Rijksmuseum van Oudheden
Leiden
Tel. +31-71-516 3163

Rijksmuseum voor Volkenkunde
Leiden
Tel. + 31-71-516 8800
<http://www.rmv.nl>

Royal Palace Amsterdam
Amsterdam
Tel. +31-20-624-8698
<http://www.channels.nl/amsterdam/paleis.html>

Singapore Art Museum
E-mail: santha/anthony@nhb.gov.sg
16 August 2000 – 16 December 2001
The Landscape in Southeast Asian Art
The exhibition uses the theme of landscapes to explore various spaces (geographical and spiritual), and various related issues such as nation, self and its identity. In relation to these spaces. Featuring a large group of Southeast Asian artists, including Basuki Abdullah,

Aeorgette Chen, and Hedi Hariyanto, the works range from conventional landscape paintings to more abstract spaces, including the body.

Stedelijk Museum De Lakenhal
Leiden
Tel. +31-71-516-5360

Stichting De Nieuwe Kerk
Amsterdam
Tel. +31-20-624 3333

Tate Modern
Tel: +44-20-7887-8008
[Http://www.tate.org.uk/modern](http://www.tate.org.uk/modern)

Tropenmuseum
Amsterdam
Tel. +31-20-5688418

Semi-permanent exhibitions about the life of people in the tropics, including a **special Southeast Asia department**.

Van Gogh Museum
Amsterdam
Tel. +31-20-5705200

Wereldmuseum Rotterdam
Rotterdam,
Tel + 31-10-2707172

26 November 2000 – 20 May 2001
Majapahit: Indonesia's Golden Age After two years of major refurbishment, the former Museum of Ethnography in Rotterdam reopened on 26 November 2000, under its new name: Wereldmuseum Rotterdam (World museum Rotterdam). One of the exhibitions marking this focuses on the kingdom of Majapahit. Based in eastern Java, and running from the 13th to the 16th centuries, it was the largest empire ever known in Southeast Asia. On display are approximately 200 objects in gold, silver, bronze and stone.

Westfries Museum
Tel. +31-229-280 028



Wereldmuseum Rotterdam
Willemskade 25, Rotterdam, 3016 DM

26 November 2000 – 20 May 2001
Majapahit: Indonesia's Golden Age
After two years of major refurbishment, the former Museum of Ethnography in Rotterdam reopened on 26 November 2000, under its new name: Wereldmuseum Rotterdam (World museum Rotterdam). One of the exhibitions marking this focuses on the kingdom of Majapahit. Based in eastern Java, and running from the 13th to the 16th centuries, it was the largest empire ever known in Southeast Asia. On display are approximately 200 objects in gold, silver, bronze and stone.



Philippines

Tel. (64-9) 303 4290
Email: info@gowlangsfordgallery.co.nz
www.gowlangsfordgallery.co.nz
Contemporary New Zealand and international painting, sculpture and photography.
Monday to Friday 10-6, Saturday 11-3

Moving Image Centre
AUCKLAND
Tel: (64-9) 360-2502
Mic@mic.org.nz
www.mic.org.nz

Pacific Age Art
AUCKLAND
Tel. (64-9) 537 2440
Email:
giles@pacificart.co.nz
www.pacificart.co.nz
Agent for leading artists from the Pacific Rim.

Specialising in recent art and commissions. Artists represented include John Bevan Ford, Ian and Kay George, Sale Jessop, Robyn Kahukiwa, Lily Aitui Laita, Anderson Lelei, Manos Nathan, Frances Palu, Diane Prince and Glenda Vilisoni, Painting, Carving, sculpture, fibre, installation, ceramics, Lithography and textiles.
By appointment

Robert McDougall Art Gallery & Annex Botanic Gardens,
Christchurch
Tel. (64-3) 365 0915
www.mcdougall.org.nz
The Robert McDougall Art Gallery, located in the Botanic Gardens, is New Zealand's most visited public art gallery featuring regular, changing exhibitions of international and national historical and contemporary art. The McDougall Contemporary Art Annex, located in the Arts Centre, features changing exhibitions of contemporary art.
Summer: Daily 10-5.30, Winter: Daily 10-4.30

Wellington City Gallery
Wellington
Tel. (64-4) 801 3959

NEW ZEALAND

Auckland Art Gallery
AUCKLAND
Tel. (64-9) 307 7700

Bowen Galleries
WELLINGTON
Tel: (64-4) 499 7805

Chiaroscuro Gallery
AUCKLAND
Tel. (64-9) 308 9239
Email: chiaroscuro@ihug.co.nz

Dunedin Public Art Gallery
DUNEDIN
Tel: (64-3) 474 3240

Govett-Brewster Art Gallery
New Plymouth
Tel. +64-6-7585149

Gow Langsford Gallery
AUCKLAND

NORWAY

Ethnographic Museum
Oslo
Tel. + 47 22 859300

THE PHILIPPINES

The Artwalk
4F Building A, SM Megamall, Ortigas Center, Mandaluyong, Metro Manila

Tel. (63-2) 634 1269

Big Sky Mind Gallery
66 B Dona Juana Rodriguez Street, New Manila, Quezon City 1112
METRO MANILA
Tel: (63-2) 414 7151
big_sky_mind@hotmail.com

Crucible Gallery
4th Floor Building A, SM Megamall, Mandaluyong, METRO Manila
Tel: (63-2) 635 6061

Finale Art File
G/20 Sunvar Plaza,
Pasay Road, Makati 1200
Tel. (63-2) 815 1813
Fax. (63-2) 810 4071
Artwalk, Level 4, SM Megamall A, Epsa, METRO MANILA
Tel. (63-2) 634 2411
Makati: Monday to Saturday 10-7
Megamall: Daily 10-9

Finale Art File
4th Floor Building A, SM Megamall, Mandaluyong, METRO MANILA
Tel: (63-2) 634-2410
Fax: (63-2) 634-2411

Gallery Genesis
718 Shaw Boulevard, Mandaluyong, METRO MANILA
Tel. (63-2) 794 806
Fax. (63-2) 819 1508

Liongoren Art Gallery
111 New York Street, Cubao, Quezon City, Metro Manila



Tel. (63-2) 912 4319
Fax. (63-2) 912 4640

Metro Manila National Capital Region

Acropolis Art Gallery
878 E. Rodriguez Jr. Ave.
Libis, Quezon City

Ad Infinitum Gallery
190 F. Blumentritt, San Juan
Tel. 7269015

Alegria Work and Decor Co., Ltd.
4/F SM Megamall Bldg. B
Mandaluyong City
Tel. 6327152

The Art Center
4/F SM Megamall Bldg. A
Mandaluyong City

Art Gallery/Agllery Art
Bagong Farmer's Avenue
Tumana, Concepcion, Marikina
Tel. 0918-8040778

Art Verite Gallery
56 Kamias Road, Q.C.

Art Works
8-A Town & Country Arcade
Marcos Highway, Cainta, Rizal
Tel. 6451441

Artistree Gallery
6/F Shangri-La Plaza
EDSA cor. Shaw Blvd.
Mandaluyong City

Artscape Gallery
1753 Nicanor Garcia St.
San Miguel Village, Makati City
Tel. 8903361, 8993211

Artists' Center and Foundation, INC.
304 Legaspi Towers
Paseo de Roxas, Makati City

Artists' Gallery
190 Aguirre Avenue
B.F. Homes Paranaque

Arts & Associates Gallery
2002-F San Juan Apartments
Roxas Boulevard, Pasay City
Tel. 5210358, Fax 5210359

Asia Art Gallery
6/F Shangri-La Plaza
EDSA cor. Shaw Blvd.
Mandaluyong City
Tel. 6321433

The Australia Center
G/F Dona Salustina Ty Bldg.
Paseo de Roxas, Makati City
Tel. 7546135, 7502850

Bahay Nakpil-Bautista
Tahanan ng Kultura
Bautista St., Quiapo, Manila
(back of Times Theater)
Tel. 7349341

Berenguer-Topcio Gallery
Magallanes Commercial Center
Magallanes, Makati City

Big Sky Mind
2/F Unit 66-B Dona Juana
Rodriguez St., New Manila
Quezon City
Tel. 4147451

Blind Tiger Bar and Gallery
Visayas Avenue, Quezon City
Tel. 9262656, 9277627, 9281158,
141-778570

Boston Gallery
72-A Boston St., Cubao, Q.C.
Tel/Fax 7229205

Budji Layug
233 Nicanor Garcia St.
Makati City

City Gallery
Rizal Park, Luneta, Manila

Contempo Gallery
Cortijos Condominium
25 Eisenhower St.
Greenhills, San Juan

Contreeras Sculptures
4/F SM Megamall Bidh. A
Mandaluyong City
Tel. 6341283

Crucible Gallery
4/F SM Megamall Bldg. A
Mandaluyong City
Tel. 6356061, Fax 6327844

De La Salle University Art Gallery
DLSU Campus
2401 Taft Avenue, Manila
Tel: 5244611

The Drawing Room
G/F Metrostar Bldg.
1007 Metropolitan Ave.
Makati City
Tel. 8976990

Espace
Unit 306, Windsor Tower
163 Legazpi St., Makati City
Tel: 8672537

Ex-Libris Café Gallery
South Superhighway
Makati City

Finale Art File
4/F SM Megamall Bldg. A
Mandaluyong City
Tel: 6342410-11, 8125034
Fax: 8104071

Freedom Bar Café
2/F Anonas Commercial Complex
Anonas St. Project 3, Q.C.
Tel. 4333884

G Design Art Gallery
(Shangri-La's) EDSA Plaza Hotel
St. Francis St., Ortigas Center
Mandaluyong City
Tel. 6338888

Galleria Aurora
19 Ponce Street
San Lorenzo Village, Makati City
Tel. 8150464



Galleria De Carlo
Robinson's Galleria Level 4
Ortigas Center, Pasig
Tel. 6345757

Galleria Ventiuono
Corporate Plaza
845 Pasay Rd., Makati City
Tel. 8938937

Galleria De Las Islas
3/F Silahis Center
El Amanecer Compound
744 Calle Real del Palacio
Gen. Luna St.
Intramuros, Manila
Tel. 5272113, 5272112

Galleria Duemila
210 Loring St.
Pasay City
Tel. 8319990, 8339815, 6336687

Gallery 27
27 Rocas Avenue
Quezon City

Gallery 139 4/F SM Megamall Bldg.A
Mandaluyong City
Tel. 6337363, 7289824

Gallery 828
6/F Shangri-La Plaza
EDSA cor. Shaw Blvd.
Mandaluyong City

Gallery MSC
31 Guerrero St.
Xavierville Subd. I
Loyola Heights, Quezon City
Tel. 4260924, 4264208, 4260942

Gallery Nine
150 Jupiter St.
Bel-Air, Makati City
Tel. 8992704

Gallery of Prints
4/F SM Megamall Bldg. A
Mandaluyong City

Gallery Y
4/F SM Megamall Bldg. A
Mandaluyong City
Tel. 6342704

George Sison Gallery
G/F Priscilla Bldg. 100
Pasong Tamo Ext., Makati City
Tel. 8938445, 8122511
Fax. 8167531

Green Papaya Art Projects
Unit 304 Sterten Place
Condominium
116 Maginhaea St.
Up Village, Q.C.
Tel. 9273187

Hiraya Gallery
530 U.N. Avenue, Manila
Tel/Fax. 5233331

Jacoby Art Gallery
Zanplaza Mall
Katipunan Ave., Quezon City
Tel. 6475789, 4389942

Kaffe Sining
Adriatico Arms Hotel
Nakpil cor. Adriatico Sts.
Malate, Manila

La Galerie, Alliance Francaise De Manille
2/F Keystone Bldg.
220 Gil Puyat Ave., Makati City
Tel. 8921768, 8132681, 880402
Fax. 8132636

Likha-Diwa Sa Gulod
1 Lt. J. Francisco Street
Krus na Ligas, Quezon City

Liongoren Art Gallery
111 New York St.
Cubao, Quezon City
Tel. 9124640, 9124319

The Living Room
73 Carmen Apartments
2000 Roxas Boulevard, Manila
Tel. 5250420

Louvre Gallery
Kamagong St.
Cor. Sampaloc Avenue
San Antonio Village, Makati City

Lupon
G/F 107 Luisa Bldg.2
Magainhawa St.
Up Village, Quezon City
Tel. 4351940, 9324664
Pager 141-029658

Luz Gallery
G/F L.V.Locsin Bldg.
Ayala cor. Makati Ave.
Makati City
Tel. 8156906

Madrigal art center
Commerce Avenue
Ayala Alabang Village
Muntinlupa City
Tel. 8071632, 7292980, 8420127

Metroopolitan Art Gallery
4/F SM Megamall Bldg. A
EDSA, Mandaluyong City
Tel. 6378387

The Metro Gallery
455 P. Guevarra St., San Juan
Tel. 7220349

Muntinlupa Art Society Gallery
35 National Road
Muntinlupa City
Tel. 8082385, 5652129, 8421602

NCCA Gallery Spaces
National Commission for Culture and the Arts Bldg.
633 Gen. Luna St.
Intramuros, Manila
Tel. 5272192

Nemiranda Art House
4/F SM Megamall Bldg. A
Mandaluyong City
Tel. 6341743-4



1614 Gallery

8495 Km. 13 West Service Rd.
South Superhighway
Merville, Paranaque
Tel. 8246665

Pacheco Art Gallery

4/F SM Megamall Bldg. A
Mandaluyong City
Tel. 6342422

Pansol Studio Pottery

3/F Glorietta IV
Ayala Center, Makati City

Pietro Gallery

4/F Shangri-La Plaza
EDSA cor. Shaw Blvd.
Mandaluyong City

Sands Gallery

Unit s-15 2/F New San Jose
Condominium II
Maginoo St. cor. Masigla Ext.
Diliman, Quezon City
Tel. 9215856

Third Space

14 Third St.
Saint Ignatius Village
Quezon City 1110
Pager 1277-07264

318 Interiors Gallery

318 Talon 1
Zapote-Alabang, Las Pinas
Tel. 8003845, 8003847

Urban Echoes Gallery

G/F Sterten Place Condominium
Maginhawa St., UP Villiage
Quezon City
Tel. 9298699, 6471439

Village Art Gallery

142 J. Elizalde St. cor. Batac
B.F. Executive Vill., Las Pinas
Tel. 8012110, 150-342321

West Gallery

4/F SM Megamall Bldg.A
Mandaluyong City
Tel. 6341284, 3721194-95, 4110336

Vacoop Art Cecter

2 Casa Manila
Gen. Luna St., Plaza
San Luis
Intramuros, Manila

Vivid Gallery of Art

IDC Place, Zapote cor. Ponte Sts.
Makati City
Tel. 896158

Z Gallery

Ground Floor, Robinson's Galleria
EDSA cor. Ortigas Ave.
Ortigas Center, Pasig

Anita GALLERY

Casa San Miguel
San Antonio
San Miguel, Zambales
Tel. c/o 6816052, 6816054

Arts and Craft Shop

KM. 43 Silang Bypass
Silang, Cavite

Baguio art Gallery

Club Safari
191 Leonard Wood Road
Baguio City, Benguet

Baguio Convention Center

Governor Pack Rd., Baguio City

Balao-Balao Restaurant and Gallery

National Highway
Angono, Rizal

Batangas Plaza Hotel

Tel. 43-7237702, 43-4211053

Blanco Museum

312-B Ibanez St.
Angono, Rizal

Blueridge Gallery

Km. 52 Café
Aguinaldo Highway, Cavite
(before Tagaytay Welcome sign)

Buhi Municipal Bldg.

Buhi, Camarines Sur

Cafe Esperanza

P.Gomez St., San Fernando, La Union

Cafe Leona

Restaurant
Vigan, Ilocos
Sur

Camalig Art

Gallery
45 G.A. Solis
St.
Lipa City,
Batangas

Casa

Comunidad
De Tayabas
Tayabas,
Quezon



Casa Vallejo

Gallery
Upper Session Road
Baguio City
Tel. 74-4448417

Chancery Archdiocese

Lingayen, Dagupan City

Chrstine's Art Gallery

Beside café by the Ruins
23 Chuntug St., Baguio City
Tel. 74-4429659

Crescent Moon Café

Asencion Road, Antipolo City

Culture Shack Gallery Café

Fields Avenue cor. Raymond St.
Balibago, Angeles City, Pampanga



De La Salle Lupa Sentrum
Right Wing Gallery
Lipa City, Batangas
Tel. 43-7561489, 7562391
loc. 202, 208

Filipino Arts Gallery
Holiday Inn Mimosa
Clark Air Base
Angeles City, Pampanga

Galeri Kamarikutan
Rizal Avenue Extension
Bancao-Bancao
Puerto Princesa, Palawan

Gteebhouse Effect Gallery
Baguio Botanical Garden
Pacdal, Baguio City
P.O. Box 309, 2600 Baguio City
Fax, 74-4436363, 0918- 2817805

Guillermo Tolentino Gallery
Hiyas ng Bulacan
Provincial Capitol
Malolos, Bulacan

Ka Lui Resraurant
369 Rizal Avenue Puerto Princesa,
Palawan

La Azotea
Session Rd., Baguio City

Legenda Hotel
Subic Bay, Zambales

M303 Ctbercafe
AND ART GALLERY
Laperal Bldg., Session Rd.,
Baguio City Tel. 74-6198361

Mahal Likha Gallery
Villa Romana, 307 Tiptop
Ambuklao Rd.
Baguio City, Benguet
Tel. 74-4447305

Nemiranda Gallery
10 Dona Elena St.
Dona Justa Subd. Phase 1
Angono, Rizal
Tel. 6510109

Pagsanjan Gallery Museum
Arte Santiago
Rizal St., Pagsanjan, Laguna

Paseo De Artes Fine Arts Tutorial Center
18 Gaerlan St.
Lucao District, Dagupan City
Tel. 0912-3847907

Pena De Francia Gallery
E.Angeles St., Naga City
Camarines Sur

ST. Philomena's Academy
Pozorrubio, Pangasinan

The Sanctuary Gallery
Maryknoll, Camp Sioco
Baguio City, Benguet
Tel. 74-4424926, 4424602

Sentro Ng Sining
AT KULTURA NG BULACAN
Bulacan Capitol Complex
Malolos, Bulacan

Sining Pangkultura
NG MARIKINA
Kapitan Moy Bldg.
J.PRizal St., Marikina

Surrounded By Water
Manila East Road Hi-way
Angono, Rizal
Tel. c/o Rommel Tuazon
6512203, 1581-6330864

Tam-Awan Village
Pinsao Proper, Purok I
Tam-Awan, Baguio City, Benguet
Tel. 74-4462949

Tiamson Art Gallery
203 Dona Nieves St.
Angono, Rizal
Tel. 6510066, 1277-53013

U.P. Los Banos-Sining Makiling Gallery
Basement, D.L. Umali Hall
University of the Philippines
College, Los Banos, Laguna

Workshop for Creative SURVIVAL GALLERY
3/F Dali Bldg. 312 Ferguson Rd.
Guisad, Baguio City
Tel. 74-3002713, 6195529

Centro Juan Sebastian
90 San Juan St.
Bacolod City, Negros Occidental
Tel. 34-23912

Cup of Art Café Gallery
Bacolod City, Negros Occidental
C/O Tel. 34-83975

AAB Gallery
Seawall Complex
San Juan St., Bacolod City

Art Center
SM City Cebu, Metro Cebu

Balay Negrense
Silay City
Negros Occidental

Cap Art Center
60 Osmena Blvd., Cebu City
Tel. 32-217519, 218102, 2536519

Cap Art Center
Justice Romualdez St.
Tacloban City, Leyte

Kanhuraw
Convention Center
Kanhuraw Hill
Tacloban City, Leyte

Leyte Smed Center
Capitol Grounds
Tacloban City, Leyte

Mariyah Gallery
Bogo Crossing, Lorena Drive
Dumaguete, Negros Oriental



U.P. Tacloban College
Tacloban City, Leyte

Watergront Cebu City Hotel
Cebu City

Atelier Karl Srasse
117 V. Mapa
cor. Lopez Jaena Sts.
Davao City
Tel. 82-2216029

Art Center Davao
Magallanes Drive, A. Pichon St.
Davao City

The Art Gallery
The U.P.Mindanao
Cultural Center
Ladislawa Ave.
Buhangin, Davao City
Tel. 82-2210343, 2210082
loc. 103, Fax 2215573

Ateneo De Davao
High School Multi-purpose Hall
Acacia St., Matina, Davao

Chums Café
G/F Cotabato Theatre Bldg.
Don Rufino Alonzo Ave.
Cotabato City, Maguindanao
Tel. 64-4213526

Gallery Linsu
Marawi City, Lanao del Sur

Genluna Art Gallery
12 Gen. Luna St. Davao City
Tel. 82-62104, Fax 2210296

Goodtimes Café
Restaurant-Gallery
8 Lopez Jaena St.
Biasong, Dipolog City

Grand Mercure Hotel
Lanang, Davao City

Lantaka Hotel
Zamboanga City

Limketkai Center
Cagayan de Oro City

Note Dame University
Library Bldg.
Cotabato City

Peace Nest House of Art
36 R. Quimpo Blvd.
Ecoland, Matina, Davao City
Tel. 82-2275423

State Investment
TRUST BLDG. (G/F)
Tiano corner Hayes Steets
Cagayan de Oro

Ateneo Art Gallery
Rizal Library Bldg.
Ateneo de Manila University
Katipunan Rd., Loyola Heights
Quezon City
Tel. 9244601 loc. 2651

Ayala Museum
Ayala Museum Bldg.
Makati Ave., Makati City
Tel. 8121191-97, Fax 8173209

Bernardino Jalanodoni House
Rizal Street, Silay City
Negros Occidental
Tel. 34-4955093

City Museum
Legaspi City, Bicol

Clark Museum
Clark Field, Pampanga

Cultural Center
of The Philippines
Roxas Blvd., Manila
Tel. 8323702
C/o Visual Arts Department

Davao Museum
Insular Village
Lanang, Davao City

Ford Academy of The Arts
Ladislawa Ave.
Buhangin, Davao City
Tel. 82-71096, 2241835

The Geronimo Berenguer
De Los Reyes, JR.
Foundation Museum
Gateway Business Park
Gen. Trias, Cavite
Tel. 46-4330313

Gsis Museo Ng Sining
GSIS Financial Center
Roxas Blvd., Pasay City
Tel. 5511301

Lopez Memorial Museum
G/F Benpres Bldg.
Meralco cor. Exchange Rd.
Ortigas Center, Pasig
Tel. 6312425, 6312417

Malacanang Heritage
FOUNDATION
J.P. Laurel St.,
San Miguel, Manila
Tel. 5212301

Metropolitan Museum of Manila
Bangko Sentral ng Pilipinas Complex
Roxas Boulevard, Manila
Tel. 5237855, 5245271, 8323645

Msu Msueum
Mindanao State University
Tambler, Gen. Santos City

Musso iloilo
Bonifacio Drive, Iloilo City
Tel. 33-72986

Museo De Capas
Capas, Tralac

Museo De Tarlac
Romulo Blvd.
Tarlac, Tarlac
Tel. 45-9821810

Museo Negrense
University of St. La Salle
Bacolod City, Negros Occidental



Museo Ng Magati

J.P. Rizal St.
Bgy. Poblacion, Makati City
Tel. 8960277, 8962464

Museo Ng Maynila

Army & Navy Club of Manila, Inc.
South Drive, Rizal Park, Manila
Tel. 5259144

Museo Ng Maynila

Army & Navy Club of Manila, Inc.
South Drive, Rizal Park, Manila
Tel. 5259144

Museo Pambata

Roxas Blvd. cor. South Drive
Rizal Park, Manila

Museo Recoletos

Mira-Mira House
Tandang Sora, Quezon City

National Museum

Old Congress Bldg.
P. Burgos St. Manila
Tel. 5271219

Quijano Museum

B-49 E. Gomez, Bacoor, Cavite
Tel. 46-4342625

Sna Agustin Museum

San Agustin Monastery
Gen. Luna cor. Real Sts.
Intramuros, Manila
Tel. 5274060

Tarlac Armed Forces Museum

University of Santo
Españo, Manila
Tel. 7313101 loc. 26

Up-Jorge B. Vargas Museum

University of the Philippines
Diliman, Quezon City
Tel. 9205301-99 loc. 7408

Vicente Mananasala

HISTORICAL LANDMARK
San Carlos Heights
Binangonan, Rizal

Zamboanga Del Norte

MUSEUM & EXHIBITION CENTER
ZNCSC Compound, Dipolog

POLAND

The Asia and Pacific Museum

Warsaw

Asia Gallery

Warsaw,
Tel. 635-28-11

Dong Nam Oriental Art Gallery

Nusantara Gallery

Warsaw
Tel. 629-24-41

PORTUGAL

Museum of Ethnology

Lisboa
Tel. +351-1-301526415

Permanent collection

Ethnological collections from
Africa, America, Asia, and Europe.

SINGAPORE

Andres Contemporary Art

Republic Plaza II #01-20
9, Raffles Place
Singapore 048619
Tel. 533 1723
Fax. 533 1726
Mon to Fri, 11 am to 7pm
At Raffles Place MRT Station
Features a fine collection of
contemporary European and Asian
paintings, sculptures and graphic works
with an emphasis on Catalan-Spanish
art. Lifestyle and art consultancy is also
available for private collectors and
corporations.

Art-2

The Substation
45 Armenian Street

Singapore 179936

Tel. 338 8713

Fax. 338 8337

Website: <http://www.planetwork.com/art2>

Mon to Sat, 11 am to 7 pm; Sun 12 pm
to 5pm

Approx. a 7-minute walk from City Hall
MRT station

Showcases a number of Singapore's
rising contemporary artists and some of
the more exciting developments in the
Southeast Asian art world, notably in
paintings, sculptures, ceramics, prints
and paperwork. Renowned for not only
featuring up and coming young talents
but also leading contemporary Myanmar
artists.

Art Focus

Centrepont # 05-07

176 Orchard Road

Singapore 238843

Tel. 733 8337

Fax. 732 0448

Mon to Sat, 11 am to 7 pm

Approx. a 3-minute walk from
Somerset MRT station

Features young and new artists and a
collection focusing mainly on contempo-
rary Asian art. Custom framing,
individual and corporate art
consultancy services are also available.

Art Forum

56, Monk's Hill Terrace

Singapore 228543

Tel. 737 3448/734 1063

Fax. 732 0298

Mon to Sat, 10 am to 6 pm by
appointment

Approx. a 5-minute walk from Newton
MRT station

A collection of contemporary Southeast
Asian and South Asian art, housed in an
old restored shophouse next to one of
Singapore's famous hawk centres –
Newton Circus Hawker Centre.

The gallery has 26 years of experience
in art dealing and provides consultancy,
sourcing, installation, valuation and
lectures.

Artfolio

Raffles Hotel Arcade #02-25

328 North Bridge Road



Singapore 188719

Tel. 334 4677

Fax. 333 5215

Mon to Sun 11 am to 7 pm

Approx. a 3-minute walk from City Hall MRT station

Features a wide variety of contemporary Asian artworks in paintings, paperworks, and sculptures. Some of the artists represented are Yusof Ghani, Ong Kim Seng, Phan Cam Thuong, Arie Smit, Eng Tay and Leng Hong. Also provides art services for both individuals and corporations.

Asian Civilisations Museum

39 Armenian Street

Singapore 179939

Tel. 375 2510/332 3015

Fax. 332 7993

nhb_acm@nhb.gov.sg

Website:

<http://www.museum.org.sg/nhb>

Tue to Sun, 9 am to 5.30 pm

Admission: S\$3 Adults; S\$1.50 Children (6 to 16 years) & Senior Citizens

Approx. a 10-minute walk from City Hall MRT station

Singapore's newest museum – the Asian Civilisations Museum – marries the best of ancient artefacts and modern technology. The first wing of the Asian Civilisations Museum, housed in the old beautifully-restored Tao Nan School, focuses mainly on Chinese culture and civilisation. There are 10 galleries boasting a wide range of ceramics, sculptures, porcelain, furniture and calligraphy. Two other galleries feature temporary exhibitions on the other Asian Civilisations, with exhibitions such as the Ramayana – A Living Tradition and harmony of Letters – Islamic Calligraphy from the Tareq Rajab Museum. The museum's second wing, to be opened in the year 2001, is housed in the old Empress Place Building along the Singapore River.

Caine's Gallery

277 Orchard Road

#01-40, Specialist Shopping Centre

Singapore 238858

Tel. 235 0658

Fax. 235 0653

Email: caine@singnet.com.sg

Mon to Sat, 9 am to 7.30 pm

Approx. a 2-minute walk from Somerset MRT station

An established art gallery in Singapore, Caine's Gallery is well-designed and equipped to show mainly Singapore's best artists' works all year round.



Christie's International Singapore

Unit 3 Parklane, Goodwood Park Hotel,

22 Scotts Road,

SINGAPORE 228221

Tel: (65) 235 3828

Fax: (65) 235 8128

www.christies.com

Cicada Gallery of Fine Arts

31/33 Ann Siang Road

Singapore 069711

Tel. 225 6787

Fax. 225 3937

Tue to Sat, noon to 7.30 pm; Sun, 12 pm to 5.45 pm

Approx. 15-minute walk from Tanjong Pagar MRT station. Situated in a picturesque part of Chinatown, this versatile gallery displays contemporary Asian Art, objects d'art and antiques from the region. It represents a variety of local and regional artists.

Cony Art Pte Ltd

Orchard Point #04-15

160 Orchard Road

Singapore 238842

Tel. 738 6672

Fax. 738 1766

Email: conyart@singnet.com.sg

Tue to Sat, 12 pm to 7 pm; Sun & Mon by appointment only

Appointment only

Approx. 3-minute walk from Somerset MRT station

A major resource for many beautiful antique Chinese ceramics and a collection that includes over 100 pieces from the Tang to the Qing dynasties.

Earl Lu Gallery

LASALLE-SIA College of the Arts

90 Goodman Road

Singapore 439053

Tel. 344 4300 (ext 102)

DID: 340 9102

Fax. 346 5708

Email: lasalle@singnet.com.sg

Mon to Fri, 9 am to 6 pm

Take SBS bus nos 12, 14, 30, 158, 196 and CSS bus no 608

The art galleries of LASALLE-SIA College of the Arts were set up as an educational resource for its students. It comprises two gallery spaces – Earl Lu Gallery has grown to be a venue for major curated and touring exhibitions. LASALLE Gallery provides opportunities for emerging artists and LASALLE-SIA students to exhibit their work.

Evolution Prehistoric Art Gallery

Raffles Hotel Arcade, #02-15

328 North Bridge Road

Singapore 188719

Tel. 334 4970/334 4971

Fax. 334 4476

Email: evolution@pacific.net.sg

Mon to Sun, 11 am to 7 pm

Approx. 5-minute walk from City Hall MRT station

A destination of Royalty, Heads of States and Hollywood superstars, Evolution offers rare and spectacular authentic prehistoric fossil masterpieces as well as ancient Egyptian, Roman and Greek artefacts and jewellery. Their collection, some of which dates back four to five billion years, is internationally acclaimed as the finest in the world.



Gajah Gallery

74 Monk's Hill Terrace
Singapore 228553
Tel. 737 4202
Fax. 737 4203
Mon to Fri, 9.30am to 6pm
Approx. 10-minute walk from Newton MRT station
The Gajah Gallery was started with the aim of promoting contemporary Southeast Asian art and offers artworks from India, Myanmar, Indonesia, Thailand and Vietnam.

Galerie Belvedere

Liat Towers # 19-01
541 Orchard Road
Singapore 238 881
Tel. 737 3080/ 737 6048
Fax. 737 1959
Mon to Fri, 9.30am to 6pm by appointment only
Approx. 5-minute walk from Orchard MRT station
Offers contemporary paintings and sculptures from leading European and Asian artists. Supplier of limited and open edition prints; exclusive distributor for the Ariel Press prints in Asia. Custom framing, individual and corporate art consultancy services are also available.

Galleries in Shopping Malls Orchard Point

160 Orchard Road
Singapore 238842
Mon to Sun, 10am to 10pm
Approx. 3-minute walk from Somerset MRT station

Over 15 art and antiques galleries, frame shops and an arts exhibition hall are all located on the 4th level of this shopping mall in the heart of Orchard Road. Check out Sin Hua Gallery for some fine Chinese paintings from mainland China from the 19th and 20th century. Most of the galleries showcase Chinese art in ceramics, jade, sculptures, lacquerware, furniture and paintings. But do not be surprised to discover antique phones, colonial and Indonesian furniture, frame shops and contemporary art too.

Lee Kong Chian Art Museum

National University of Singapore (NUS) Museum

5th Level of AS6

10 Kent Ridge Crescent
Singapore 119260
Tel. 874 6496
Website: <http://www.nus.sg/webllc>
Mon to Sat, 9.30am to 4.30pm
From Clementi MRT Station, take Bus Number 96 to the NUS Administration Building

An impressive collection that is centered around four main areas of Chinese art: ceramics, jade and bronze, painting and calligraphy. Some collections date as far back as the Neolithic times and others are turn of the century artworks.

Lorin & Kristy Fine Art Gallery Pte Ltd

Kaki Bukit Techpark I
29 Kaki Bukit Crescent
Singapore 416260
Tel. 743 3693
Fax. 742 2129
Mon to Fri, 9.30am to 6.30pm, Sat & Sun by appointment only
From the Eunos MRT it is a 10 to 15 minute bus ride on SBS bus 15 or if going by taxi, inform taxi driver that it is off Kaki Bukit Ave 3 Home for a remarkable collection of contemporary Indonesian fine art pieces. Masters like Hendra Gunawan, Walter Spies, Le Mayeur and modern day geniuses: Jean Pecasse, I Made Surita and Arifien are featured. Also provides a comprehensive corporate art service.

Maritime Museum

Artillery Avenue
Sentosa
Singapore 099949
Tel. 275 0133
Fax. 275 0161
Mon to Sun, 10am to 7pm
Admission: S\$2 Adults; S\$ 0.50 Children
Sentosa Bus A from the World Trade Centre Bus Terminal or Sentosa Bus E from Orchard Road
As the world's third busiest port, Singapore's maritime history is exciting, colourful and varied. This gallery displays every fascinating detail like Southeast Asia's finest collection of ship models, rare ship charts, the evolution of boats, old fishing methods and a century-old steam crane.

National Heritage Board

93 Stamford Road, Singapore 178897
Tel. + 65-332 3573
Fax. +65-334 3054

The National Museum

61 Stamford Road, #02-01
Stamford Court,
Singapore 178892
Tel. +65-3309552
Fax. +65-3309568
Daily 9 am - 5.30 pm

Ng Engteng Gallery

National University of Singapore (NUS) Museum
Central Library Building
10 Kent Ridge Crescent
Singapore 119260
Tel. 874 4333
Fax. 778 3738
Website: <http://www.nus.sg/webllc>
Mon to Sat, 9.30am to 4.30pm
From Clementi MRT Station, take Bus Number 96 to the NUS Administration Building

Works by Singapore's foremost sculptor – Ng Eng Teng. Eng Teng has produced some of Singapore's most memorable and inspiring sculptures. It is the only comprehensive collection of work by an artist in Singapore, spanning 40 years of continuous activity.

Noticesthe Gallery

Four Seasons Hotel # 01-08/07
190 Orchard Boulevard
Singapore 248646
Tel. 734 2070
Fax. 725 7006
Mon to Sat, 10.30am to 6pm; Sun, 12pm to 5pm
Approx. 15-minute walk from Orchard MRT station
A young and bold gallery that does not restrict itself to any particular art genre. It holds six to eight exhibitions a year featuring international and regional paintings, sculptures and photography from artists as noteworthy as Robert Mapplethorpe, Stefano, Fauzan Omar and William Chan.



Opera Gallery Pte Ltd

Takashimaya Shopping Centre
#02-12H
391 Orchard Road
Singapore 238872
Tel. 735 2618
Fax. 735 2616
Email: opergal@singnet.com.sg
Mon to Sun, 11 am to 8 pm
Approx. 5-minute walk from Somerset
or Orchard MRT station
This delightful art gallery in the heart of
a trendy shopping mall features diverse
contemporary European and exotic
Asian styles and arresting sculptures.

Orchard Gallery

160 Orchard Road
Orchard Point #04-01/02/03
Singapore 238842
Tel. 732 7032
Fax. 734 1415
Email: yingart@pacific.net.sg
Mon to Sun, 11 am to 8 pm
Approx. 3-minute walk from Somerset
MRT station
Features a fine collection of
contemporary Chinese watercolours,
oils and brush paintings as well as local
artists' works.

Plum Blossoms Gallery

Raffles Hotel Arcade #02-37
328 North Bridge Road
Singapore 188719
Tel. 334 1198
Fax. 334 0445
Website: <http://www.plumblossoms.com>
Mon to Sun, 11 am to 8 pm
Approx. 3-minute walk from City Hall
MRT station
Has an outstanding collection that
includes both museum quality contem-
porary Asian art as well as Chinese
textiles and porcelain, Vietnamese art,
Tibetan antique carpets and silverware.
Also provides corporate and private
consultancy services on textiles and
paintings.

Shenn's Fine Art

37 Blair Road
Singapore 089937
Tel. 223 1233
Fax. 233 1238

Website:

<http://planetnetwork.com/shenns/email>
Mon to Sat, 10am to 6pm; Sun by
appointment only. Tell a taxi that it is
off Kampong Bahru Road

Has an impressive collection of master
works from Southeast Asia, including
Vietnam and India. Exclusively represents
a stable of the finest Southeast Asian
and Asian artists, including Wong Keen,
Zhuang Shengtao, Liu Jilin, Dawn
Chen-Ping and many others. Enjoy over
500 museum-quality paintings from
the representational to the
abstract-expressionist

Sin Hua Gallery

160 Orchard Road
#04-19/20
Orchard Point
Singapore 238842
Tel. 737 3334
Fax. 737 4447
Mon to Sat, 11 am to 7 pm, closed on
Sun and public holidays
Approx. 3-minute walk from Somerset
MRT station
Sin Hua Gallery was set up in 1980 to
deal exclusively in quality
paintings. In the past 18 years, more
than 58 exhibitions were held in
Singapore, Malaysia Hong Kong and
Taiwan. Artists represented are:
Wu Guanzhong, Li Keran, Zhu Qizhan,
Lu Yanshao, just to name a few.

Singapore Art Museum

71 Bras Basah Road
Singapore 189555
Tel. 332 3222
Fax. 334 7919
Website: <http://www.museum.org.sg/nhb>
Tue to Sun, 9 am to 5.30 pm
Admission: S\$3 Adults; S\$1.50 Children
(6 to 16 years) & Senior Citizens
Approx. 10-minute walk from City Hall
MRT station

This was the St. Joseph's Institution, the
first Catholic boys' school in Singapore.
It was restored and re-opened in 1996,
as the first-of-its-kind art museum in the
region with advanced museum facilities.
It has the largest public collection of

20th century Singaporean and
Southeast Asian (SEA) art. Visitors to
the museum will be able to enjoy
rotating exhibitions built around the
museum's 3,000- strong SEA works.
The museum was also host to
exhibitions from Guggenheim Museum
in New York to Leonardo da Vinci
masterpieces.

Singapore Art Museum

E-mail: santha_anthony@gov.sg
<http://www.nhb.gov.sg>

16 August 2000 – 16 December 2001
The Landscape in Southeast Asian Art
The exhibition uses the theme of
landscapes to explore various spaces
(geographical and spiritual), and various
related issues such as nation, self and its
identity, in relation to these spaces.
Featuring a large group of Southeast
Asian artists, including Basuki Abdullah,
Georgette Chen, and Hedi Hariyanto,
The works range from conventional
Landscape paintings to more abstract
Spaces, including the body.

Singapore History Museum

93 Stamford Road
Singapore 178897
Tel. 375 2510 (for information)
332 3659 (Ticket counter)
Fax. 332 3587
Website: <http://www.museum.org.sg/nhb>
Tue to Sun, 9 am to 5.30 pm
Admission: S\$3 Adults; S\$1.50 Children
(6 to 16 years) & Senior Citizens
Approx. 5-minute walk from Dhoby
Ghaut

Originally opened as the Raffles
Museum in 1887, this grand old building
is an example of colonial architectural
heritage. It is a "must-see" for any
tourist, especially the three-metre high
dome. The museum focuses on exploring
and presenting the heritage and
nationhood of the people of Singapore.
Exhibitions such as Bukit Larangan:
History of Fort Canning, and Rumah
Baba : Life in a Peranakan House
highlight trends and developments that
have characterised and shaped life and
history in Singapore from as early as the
14th century until the modern day.



Singapore Philatelic Museum

23B Coleman Street
Singapore 179807
Tel. 337 3888
Fax. 337 8958
Website: <http://expo.net.sg/friends/spm>
Tue to Sun, 9am to 4.30pm
Admission: S\$2 Adults; S\$1 Students & Senior Citizens
Approx. 5-minute walk from City Hall MRT station

The former Methodist Book Room, this classic elegant building was designed and built in 1907. It is now home to the first Philatelic Museum in Singapore. A home that proudly displays in six galleries a series of interactive exhibits, a rare collection of stamps from the region and 180 countries around the world.

Soobin Art Gallery Pte Ltd

No. 1 Halifax Road
Singapore 229257
Tel. 392 2066
Fax. 392 2366
Email: duhualou@pacific.net.sg
Website: <http://www.soobinart.com.sg>
Mon to Sat, 11 am to 7 pm Sun; 11 am to 5 pm

Approx. 3-minute walk from Kandang Kerbau Women & Children Hospital
A well-respected consultant in the international art market, Soobin Art Gallery specialises in fine contemporary Chinese and Southeast Asian Art.

South and Southeast Asian Art Collection

National University of Singapore (NUS) Museum
Website: <http://www.nus.sg/web/klc>
A comprehensive and varied collection that dates as far back as 1,500 years. The collection is still awaiting a home but a few pieces are exhibited throughout the year at the other two NUS museums or at other major art exhibitions like The Retrospective of Thomas Yeo or at the Alamkara exhibition held at the Singapore History Museum.

Spink Singapore Pte Ltd

Goodwood Park Hotel

No. 1 Parklane
22 Scotts Road
Singapore 228 221
Tel. 738 4919
Fax. 738 2404
Email: spinksng@pacific.net.sg
Mon to Fri, 10am to 6pm
Approx. 5-minute walk from Orchard MRT station

As a branch of Spink London, one of the world's oldest art dealers and auctioneers, Spink Singapore draws from over 300 years of experience in art dealing and collecting. Their exhibitions for sale feature antique jewellery as well as outstanding Oriental works of art from Asia and Southeast Asia.

The Substation Art Gallery

45 Armenian Street
Singapore 179936
Tel. 337 7800
Fax. 337 2729
Email: admin@substation.org.sg
Mon to Sun, 11 pm to 9 pm
Approx : 5-minute walk from City Hall MRT Station

Built in 1926, this old power station was converted to Singapore's first multi-cultural, multi-media and multi-disciplinary arts centre. The Gallery is noted for its experimental and innovative art practices, but it also features more traditional art forms. It thrives on diversity and originality.

Tan Swie Hian Museum

460 Sims Avenue
Singapore 387301
Tel. 744 3551
Fax. 747 8575
Mon to Fri, 10am to 5pm
Approx. 5-min walk from either Aljunied or Paya Lebar MRT Station
Located on the top floor of the Tomlinson Collection, the 300 sq-metre private museum is home to a collection of painting, sculptures, ceramics, prints, drawings, calligraphy and literacy works by cultural medallion award artist, Tan Swie Hian.

Tanglin Shopping Centre

19 Tanglin Road
Singapore 247909
Mon to Sun, 10am to 10pm
Approx. 20-minute walk from Orchard MRT station

An absolute treasure trove of art and antique shops. Over 35 shops spread over four levels intermingled with tailors, carpet merchants, jewellers and home furnishings. Do look out for Tzen Gallery on the basement level – a gallery not to be missed. A great source for Chinese paintings, contemporary paintings, prints, antique Chinese and Indonesian furniture, ornaments from Asia and Southeast Asia. On the 2nd floor, Antiques of the Orient specialises in genuine antiquarian maps, photographs, prints and Japanese woodblock prints from all over the world.

The Tolman Collection

120 Cairnhill Road
Singapore 229704
Tel. 736 2120
Wed to Mon, 11 am to 7pm; closed on Tues and by appointment only

This gallery features contemporary Japanese art and is the only one of its kind in Singapore. It represents three dozen internationally-recognised artists. A branch of the highly regarded gallery in Tokyo with a 25-year history.

The Turning Point Gallery

23A Smith Street
Singapore 058937
Tel. 323 2100
Fax. 222 4703
Email: tp-gallery@pacific.net.sg
Tue to Fri, 11 am to 5.3pm; Sun, Mon and public holidays by appointment only
Approx. 15-minute walk from Tanjong Pagar MRT station
Located in a colourful shophouse in the heart of Chinatown, the Gallery features revolving exhibitions of contemporary and traditional art and fine craft. Permanently displayed are unique and exclusive jewellery creations by international designers.



Wetterling Teo Gallery

11 Kim Yam Road
Singapore 239326
Tel. 738 2872
Fax. 735 6495
Email: wttrleo@pacific.net.sg
Mon to Fri, 11 am to 6pm; Sat & Sun,
12pm to 5pm or by appointment

A gallery that focuses on American Contemporary art as well as work by promising local artists. Some of the artists represented are Roy Lichtenstein, Robert Rauschenberg, Frank Stella, David Hockney, Jasper Johns and James Rosenquist. It has 20 years of dealing experience in Sweden.

SWITZERLAND

Art & Public

Geneva
Tel. (41-22) 781 4666
Art & Public specialises in minimal and conceptual art and photography, and shows work by Huang Yong ping, Wang Du, Mariko Mori, Zhou Tiehai, Liang Shaoji, Nobuyoshi Araki, Yasumasa Morimura, Noritoshi Hirakawa, Yan Pei Ming and Zhang Peili.
Tuesday to Friday 2.30-6.30,
Saturday 12-5

Barbier-Mueller Museum

Geneva
Tel. +41-22-3120270

Baur Collection

Geneva
Tel. +41-22-3461729

Museum der kulturen

Basel
Tel. +41-61-2665500
<http://www.mkb.ch>

Rietberg Museum

Zurich
Tel. +41-1-202452

TAIWAN

Art Galleries Association, R.O.C.

Taipei
Tel. (886-2) 752 7822

Hanart Tz Gallery

Taipei
Tel. (866-2) 882 9772

Lin & Keng Gallery Inc

Taipei
Tel. (866-2) 2750 8811
Email: lkart@ms19.hinet.net
Representing Chinese masters and contemporary artists from Taiwan.
Tuesday to Sunday 11-7

The National Palace Museum

Taipei
Tel. + 886-2-2881 2021
<http://www.npm.gov.tw>

New Phase Art Space

Tainan
Tel. (886-6) 226 7899

Taipei Fine Arts Museum

Taipei
Tel. +886-2-5957656
tfam-1@ms2.hinet.net
www.tfam.gov.tw

THAILAND

Akko Collectors House

919/1 on Sukhumvit Main Road,
(near Soi 49 Bus Stop),
Bangkok 10110
Tel. (66-2) 259 1436
Fax. (66-2) 662 4209
Monday to Saturday 10-7

Gallery of Fine arts

Silpakorn University
Klan Gwan House 11, 19th floor
140/1 Wireless Road
Bangkok 10330
Tel. +66-2-255 9100
ext. 201
Fax. +66-2-255 9113 14

Aim at developing a closer relationship between Thailand and Europe and to enhance cross-cultural dialogues.

European artists will be working in Thailand as artists in residence.

Thai Art Foundation

Minervalaan 31
1077 NL Amsterdam
Tel: +31 -20-670-0066
Fax: +31 -20-670-0918
E-mail: thartfoundation@yahoo.co.uk

Akko Collectors' House

919/1 Sukhumvit Rd. (Soi 49-50)
Bangkok 10110
Tel : 259-1436
Fax : 662-4209
Exhibition Co-ordinator : Atsuko Suzuki
Davies

About Studio-Gallery

402-408 Maitreejit Rd.
Pomprab
Bangkok 10100
Tel : 623-1742
Fax : 623-1743
Director : Klaomard Yipinsoi



Damrong Wong-Upraraj, Northern Village (tempera) 1959

A Framing

Sukhumvit Rd. (Soi 55)
Klongtun
Bangkok 10110
Tel : 392-4086
MGR. Winai Arpamongkol



Art in Frame

Sukhumvit Rd. (Soi 33-33/1)
Klongtun,
Bangkok 10110
Tel : 261-0375
MGR.: Kay

Amari Atrium

2nd Floor Amari Artrium Hotel
Bangkok 10300
Tel : 718-2000

Ahingsa Art Gallery

306 Moo 13
Robwing Rd.
Chinag Rai 57000
Director : Rebecca Veldon Sithiwongsa

Baan Bangkok Gallery

591 Phrasumen Rd.
Bowonniwet
Bangkok 10200
Tel : 281-6237

Bangkok Gallery

2/5 Sukhumvit Rd. (Soi 20)
Bangkok 10110
Tel : 258-1506, 663-4147
Fax : 258-1506

Bangkok University Art Gallery

Klue Nam Tai Campus
40/4 Rama 4 Rd.
Klongtoey
Bangkok 10110
Tel : 671-7526
Director : Ajarn Nipunt Orannivej
Asst. Sarunya Garasraporn

Bangkok Bank Art Centre

Pan Fah Branch
Ratchadamnern Rd.
Bangkok 10200
Tel : 282-2396
Director : Khun Somjai Wongdeth

B-B Gallery

116/18 Sukhumvit Rd. (Soi 23)
Bangkok 10110
Tel : 260-1518
MGR. Khun Wanna Poonyapisunt

British Council Gallery

254 Chulalongkorn Soi 64
Siam Square, Phayathai Rd.
Pathumwan,

Bangkok 10330

Tel : 252-6136-8, 611-6830
Fax : 253-5311, 253-5312
Art Officer : Khun Malika Jam-laor

Baan Ratchawat

64 Soi Santisuk, Nakorn-Chaisi Rd.
Dusit, Bangkok 10300
Tel./Fax : 243-6012
Director : Natprakal Hutinta

Burapha Museum of Art

Burapha University
114 Moo 7, Sansuk



Chonburi 20131

Tel : (6638) 745-900 ext. 2510-1
Fax : (6638) 391-042

Chulalongkorn University Art Centre

Phyathai Rd.,
Pratumwan
Bangkok 10300
Tel : 218-2964/218-2903-5
Fax : 215-3617
Deputy Director : Assoc. Dr. Apinun
Posayanonda

Chinese Painting & Calligraphy Gallery

586-590 Sukhumvit Rd.
(Soi 22 and 24)
Bangkok 10110
Tel : 259-4210
MGR: Ms. Chen Gie

C.V.N. Art Center

4th Floor Emporium Plaza
Sukhumvit Rd. (Soi 24)
Bangkok 10110
Tel : 664-8644
Fax : 253-7532
MGR : Khun Chaleo Wattana

City Gallery

Siam City Hotel
477 Sri Ayutthaya Rd.,
Phayathai
Bangkok 10400
Tel : 247-0123

Chao Phraya Club Art Gallery

The Boathouse,
Kata Beach
Phuket
Tel : (015) 076330

Chiangmai Contemporary Art Museum

Chiangmai University
Nimmanhemidara Rd.
Sudebh
Chiang Mai 50200
Tel : (053) 941-301-4
Director : Aj. Umna Kuntainn

Decorative Arts Gallery

Faculty of Decorative Arts
Silpakorn University
Na Phralan Rd.
Bangkok 10200
Tel : 221-5874
Director : Eagchard Chun-urairutana

Faculty of Painting-Sculpture-Graphic Gallery

Silpakorn University
Na Phra Lan Rd.,
Bangkok 10200
Tel : 225-8991
Director : Dr. Kristana Hongutane

Faculty of Fine Arts Gallery

Rajamangala Institute of Technology
Klong 6, Tanyaburi
Phratumtani
Tel : 549-32-70-5
Fax : 577-5022
Director : Aj. Sermukdi Sookpam



Gallery 55

2nd Floor, Home Place Bldg.
Soi Thonglor
Sukhumvit Rd. (Soi 55)
Bangkok 10110
Tel : 712-7148
Fax : 712-7146

Garuda Fine Arts Gallery

29/7 Ekamai 10
Sukhumvit Rd. (Soi 63)
Bangkok 10110
Tel : 714-1645-6
Director : Mr. Thilo Von Watzdorff
Asst. Mr. Bin Abdulla

Goethe Institute Gallery

South Sathorn Rd.
Bangkok 10120
Tel : 287-0942-4
Director : Art Officer : Khun Suwanna
Kunawanakit

Japan Cultural Center Gallery

10th Floor, Serm-mit Tower
159 Sukhumvit Rd. (Soi 21)
Bangkok 10110
Tel : 260-8560-4
Fax : 260-8565
Director : Mr. Yutaka Homma

Kon Gan University Art Gallery

Mitrabhap Rd.
Khon Gan 40002
Tel : (043) 246-592

Marsi Gallery

Suan Pakkard Palace
Chumbhot-Pantip Art Centre
353 Sri Ayutthaya Rd.
Bangkok 10400
Tel : 246-1775-6 ext. 138
Fax : 245-6369
Director : Aithitya Chantwongsa

Mercury Art Gallery

2nd Floor, Mercury Tower
Pleonchit Rd., Chidlom
Bangkok 10330
Tel : 658-6226
Fax : 658-6228
MGR: Khun Salin Sriprasert

Numthong Gallery

Co-op Housing Bldg.
1129/29 Thoet Damri Rd.,

Dusit, Bangkok 10300

Tel : 243-4326

Fax : 243-4326

Owner : Khun Numthong Sae Tang

Asst : Korakot Duangkao

National Gallery

Chao Fah Road
Bangkok 10200
Tel : 282-2639, 282-0637, 281-2224
Fax : Press 23
Director : Khun Kanittha Wongpanitch

P.R. Gallery

3rd Floor, Graysorn Plaza
Ploenchit Rd.
Bangkok 10330
Tel : 651-1320
MGR. Pairoj Wattana
Asst. Khun Prisana Wanosothe

Project 304

49/3 Setsiri Rd. (Opp. Vichaiyudh
Hospital)
Phyathai, Bangkok 10400
Tel : 279-7795

Place of Art Gallery

321/3 Sukhumvit Rd. (Soi 31)
Klongton, Klongtoey
Bangkok 10110
Tel : 261-0390-1
Fax : 261-0383
Managing Director : Khun Nakmimit
Suwannakudt

Pohchang Art Gallery

Tripetch Rd., Wangburapapirom
Bangkok 10200
Tel : 623-8790-8
Director : Aj. Tawatchai Tiengsukya

Rim Suan Gallery

12nd Floor, Fortune Hotel
Rachadaphisek Rd.
Dindaeng
Bangkok 10320 Tel : 641-1500

Rotunda Gallery

Neilsen Hays Library
195 Surawong Rd.
Bangkok 10500
Tel : 233-1731, 01-8297131
H: 618-2508
Director : Annie Silbustein
Asst: Shirapan Metheesriyabhong

Rangsit University Art Gallery Design

School of Fine and applied Arts
Muang-Ake, Phaholyothin Rd.
Phatum Thani 12000
Tel : 997-2222 Ext. 3436
Director : Aj. Thanom Japukdee

Siam Art Space

1741/43-47 Rama IV Rd.
Klongtoey
Bangkok 10110
Tel : 671-6878
MGR: Chot-Chuang Meepom

Space Contemporary Art

582/9 Taiping Tower
Sukhumvit Rd. (Soi 63)
Bangkok 10110
Tel : 711-4427
Director : Visutra Suthikulvet MGR:
Naina Homcham

Suan Dusit Art Gallery

Faculty of Art Design
Ratchabhat Institute (Suan Dusit)
Ratchasima Rd.
Bangkok 10300
Tel : 243-6891-8/668-7450-9
Fax : 243-0457
Director : Chaibong Buppaglin

Surapon Gallery

1st Floor Tisco Tower
Sathorn Nua Rd.
Saladaeng
Bangkok 10500
Tel : 638-0033-5
Fax : 638-0031
Director : Surapon Bunyapamai

Sip-Prapa Art Centre

2224 Pattanakarn Rd.
SuanLuang
Bangkok 10250
Tel/Fax : 722-6122
Director : Anan Prapaso

Srinakarinwirot University Gallery

Sukhumvit Rd. (Soi 23)
Bangkok 10110
Tel : 260-0123
Fax : 260-0123
Director : Daen-Bhong Wongsaraj



Siam Art Gallery
112/3-5 Ratchada Thapra Rd.
(Soi 11)
Bukkalo, Bangkok 10600
Tel : 476-9700
MGR : Wirat Thumtavoranvit

Siam Art Gallery
72/1 Bunkant Rd.
Kanhong, Hatyai
Songkla 90110
Tel : (074) 233-759

S.P. Gallery
Silom Gallerie (Floor B)
Silom Rd.
Bangkok
Tel : 267-7795,
MGR : Sachit Loiudomchoke

Silpakorn University Art Centre
Na Phralam Rd.
Bangkok 10200
Tel : 221-3841
Director : Asst. Prof. Vichoke
Mugdamanee

Tadu Contemporary Art
Royal city Ave.
31/4 Soi Soonvijai
Rama 9 Rd.
Bangkok 10310
Tel : 203-0926-30
Fax : 203-0931
Director : Luckana Kunavichayanont

Thavibu Gallery
The Silom Galleria Building, 3rd Floor
Suite 308, 919/1 Silom Rd.
Bangkok 10500,
Tel : 266-5454
Fax : 266-5455
Director : Jorn Middelborg

Viengtavern Gallery
54 BB Bldg. 2/F
Sukhumvit Rd. (Soi 21-Asoke)
Bangkok 10110
Tel : 664-3875
Fax : 664-3875
MGR : Anucha Prangprasert

Rama IX Art Museum Foundation
130 Sintorn, G.Floor
Wireless Rd.

Patumwan
Bangkok 10330
Tel : 650-9891-2
Fax : 650-9892
MGR: Pitukpol Visuthiumporn

USA

The Art Institute of Chicago
Chicago
Tel. +1-312-4433600

Art Projects International
New York
Tel. (1-212) 343 2599
Email: api@artprojects.com
www.artprojects.com
Contributing to contemporary cultural
dialogue through representation of
international artists from Asia.
By appointment

Arthur M. Sackler Gallery
Washington
Tel. +202-3574880

Continuing indefinitely
Sculpture of South and Southeast
Asia **Luxury Arts** of the Silk Route
Empires

Arthur M. Sackler Museum
MA
Tel. +1-617-4952397

Asian American Arts Centre
NEW YORK
Tel: (1-212) 233 2154

The Asia Society
New York
Tel. +1-212-2886400

Asian Art Museum of San Francisco
California
Tel. +1-415-3798800

**Austral Gallery – Australian
Contemporary Art**
St Louis
Tel. (1-314) 776 0300
www.australian-art.com

Bose Pacia Modern
New York
Tel: +1-212-989-7074
E-mail: Antenna00@hotmail.com

China Avant-Garde
New York
Tel. (1-212) 585 2975
www.china-avantgarde.com
Art advisory services to private and
corporate collectors specialising in the
acquisition of important contemporary
Chinese art.

China Institute
New York
Tel. +1-212-7448181s

Chinese Culture Center
SAN FRANCISCO
Tel: (1-415) 986 1822

The Cleveland Museum of Art
Ohio

Contemporary Arts of India
New York
Tel. (1-212) 206 8350

Curtis Arts Humanities Center
Denver
Tel. + 1-303-797 1779

Denver Art Museum
Denver
Tel. +1-303-6402295

Ellen Kim Murphy Gallery
SANTA MONICA
Tel: (1-310) 435 7976

First USA Riverfront Arts Center
Delware
Tel. +1-302-777-7767

Freer Gallery of Art
Washington
Tel. +1-202-3572104

Galerie La Vong
Tel. (1-203) 661 5850
Email: LavVong@Netvigador.com

Gallery Cyclo
SAN Francisco



Tel. (1-415) 333-3800
Email: cyclo88@aol.com
www.gallerycyclo.com
www.destinationvietnam.com
www.thingsasian.com

Grey Art Gallery
New York

Honolulu Academy of Arts
Honolulu
Tel. (1-808) 532 8700
www.honolulacademy.org
Hawaii's only general fine arts museum.
Thirty Galleries surround six charming
courtyards. Asian, Western, primitive and
contemporary art. Cafe, gift shop,
theatre and art centre.

Indiana State Museum
Indiana
Tel. +1-317-2321637

Japan Society Gallery
New York
Tel. (1-212) 832 1155
Email: proffice@japansociety.org
www.japansociety.org

Kimbell Art Museum
Texas
Tel. +1-817-3328451

Max Protetch Gallery
NEW YORK NY
Tel. (1-212) 633 6999
Mprotetch@aol.com
www.artnet.com/protetch.html
until 14 January 2001
The Year One:
Art of the Ancient World East and West
An exhibition of masterpieces from the
museum's collection that were produced
in the period just before and after the
Year One. The approximately 150 works
come from Western Europe, the
Mediterranean, Africa, the Middle East,
India, China, Southeast Asia, and the
Americas. The exhibition will highlight
the interconnections that existed
between many of these widely separated
parts of the world.

The Metropolitan Museum of Art
New York
Tel. +1-212-8795500

The Museum of Fine Arts
Houston
Tel. +1-713-639 7597

Pacific Asia Museum
California
Tel. +1-818-4492742

Pacific Bridge Contemporary
Oakland
Tel. (1-510) 451 8840
www.asianartnow.com

Patricia Correia Gallery
SANTA MONICA
Tel. (1-310) 264 1760
Correia@earthlink.net
www.correia-gallery.com

Peabody Museum of Salem
Salem
Tel. +1-508-745187679500

The Philadelphia Museum of Art
Pennsylvania
Tel. +1-215-763800
http://pma.libertynet.org

Robert Miller Gallery
New York
Tel. (1-212) 980 5454

Seattle Art Museum
Seattle
Tel. +1-206-6258900

Seattle Asian Art Museum
Seattle
Tel. +1-206-6258900

Sotheby's New York gallery
New York
Tel. +1-212-606-7176

University of Hawaii Art Gallery
Hawaii
Tel. (1-808) 956 6888

Virginia Museum of Fine Arts
Richmond
Tel. +1-804-3670844

Z Gallery
New York
Tel. (1-212) 966 8836

VIETNAM

Art Gallery Hien Minh
1st Floor, 44 Dong Khoi Street Distr.
I Ho Chi Minh City
Tel. +84-8-224-590

Permanent collection
Work by, among others, the Vietnamese
painter Nguyen Thi Hien.

Galerie Quynh
Ho Chi Min City
Tel./Fax: +84-8-821-7995
E-mail: info@galeriequynh.com
March 2001
Group Exhibition
Presenting information on contemporary
Vietnamese art and exhibiting art works
by artists living and working in Ho Chi
Min City at selected locations, Galerie
Quynh will organise a Group Exhibition
of works by young Vietnamese artists in
March 2001. Please contact the gallery
for exact details on venues.

Galerie Quynh
P.O. Box 695, Saigon Central Post Office
Ho Chi Min City
Tel./Fax: info@galeriequynh.com
Http://www.galeriequynh.com

Galleria Vinh Loi
49 Dong Koi Street, I
Ho Chi Minh City
Tel. +84-8-222006

Permanent collection
Among other items the work of
the Vietnamese artist Bui Xuan
Phai (1921-1988)

Red River Gallery
71A Nguyen Du Street Hanoi
Tel. +84-4-229064

Permanent collection
Work of such Vietnamese
painters as Khuc Thanh Binh,
Thah Chuong, Dao Tanh Dzuy,
Pnam Minh Hai, Dang Xuan Hoa,
Tran Luong, Pham Hong, Thai, Boa
Toan, Truong Tan, Do Minh Tam.



Salon Natasha

30 Huang Bong, Hanoi

Tel: +84-4-826-1387

E-mail: natasha@artsalonnatasha.com

[Http://www.artsalonnatasha.com](http://www.artsalonnatasha.com)

Salon Natasha is the first private gallery in Hanoi. After serving for many years as a meeting place for independent artists and intellectuals the gallery was established in 1990 by the Russian immigrant Natasha Kraevskaia and the artist Vu Dan Tan at their family home and artists's studio. Ever since, the gallery hold exhibitions of booth Vietnamese

Salon Natasha

Tel: +84-4-826-1387

E-mail: natasha@artsalonnatasha.com

[Http://www.artsalonnatasha.com](http://www.artsalonnatasha.com)

Salon Natasha is the first private gallery in Hanoi. After serving for many years as a meeting place for independent artists and intellectuals the gallery was established in 1990 by the Russian émigré Natasha Kraevskaia and the artist Vu Dan Tan at their family home and artist's studio. Ever since, the gallery hold exhibitions of both Vietnamese and foreign artists.

Xuan Gallery

32 Vo Van Tan, D3, Ho Chi Minh City

Tel/Fax (848) 829 1277

Rotating, year-round exhibitions and sale of selected contemporary paintings by well-known artists: Tran Luu Hau, Luu Cong Nhan, Ho Huu Lhu, Bui Quang Ngoc, Le Thanh Minh, Phan Viet Hong Lam, Dang Xuan Hoa, Phan Mai Truc, Dang Thi Duong. Daily 10-8

Art can help the disabled

Art can help the healing process and lead to worthwhile work for the disabled

Six Southeast Asian nations yesterday spoke of the importance of art in healing disabled people.

Delegates from Indonesia, Malaysia, Philippines, Singapore, Vietnam, and Thailand, met at a regional seminar on "Art of People with Disabilities" to share their experiences on how art could make the disabled creative and capable of expressing their inner selves.

Alma Urduja Quinto, president of Philippine Art Educators Association, recalled her experience in working with sexually abused children who became mentally retarded. Ms Quinto asked the girls to draw something, and what they created turned out to be images of insecurity, low self-esteem and lack of confidence.

They rubbed out their drawings because they believed their work to be imperfect and ugly.

However, after several sessions, the children gained confidence. Their small, dark and incomplete drawings blossomed into big, colourful and interesting works of art.

Ms. Quinto said art has a great healing power as it can soothe a tired and tense body and calm one's spirit.

Victor Chin, an artist and writer from Malaysia, told the story of 17-year-old Colin, the only blind piano student at a music college. Colin can now get through his learning difficulties with the help of his mother who has learned to transcribe musical notation in Braille.

However, although much vocational training was available for the deaf in particular, people with physical, cerebral, visual and intellectual disabilities were not so lucky.

More than that, despite their ability and artistic potential, many disabled students, when leaving school, could not be certain of a career that interested them. Most had to make do with less creative jobs such as factory work.

Disabled people also found it hard to compete in the open market when selling their work. The seminar was held in conjunction with Art for All, an art camp for the disabled. - Anjira Assavanonda, Bangkok Post 5-7-01

World Wide Web sites

THE ARTS

Southeast Asian Images and Texts Project (SEAIT)

<http://www.library.wisc.edu/etext/seait/>

Experimental art project which combines images, texts and music from Southeast Asia.

Traditional Chinese Operas

<http://www.sh.com/culture/opera.htm>

Part of the 'Shanghai Internet', this site introduces a variety of Chinese opera styles.

Tribal Art Directory

<http://www.tribalartdirectory.com>

This new British site is the first freely-available Internet directory of the international dealers, galleries, museums and related services specialising in tribal and non-western arts from Asia, Africa, Oceania and the Pacific.

Arts of Asia

<http://www.artsofasianet.com>

Founded in 1970, Arts of Asia is one of the leading Asian art magazines. Published six times a year, it is distributed to 80 countries.

E-Art ASEAN Online

<http://www.freespeech.org/eartasean/>

this is an interactive resource for electronic art in Southeast Asia, with a database, a journal, a forum, links and webart by southeast Asian artists.

The Asian Centre

<http://www.theasiancentre.com>

Here you can find mostly articles on Asia's heritage and traditional arts.

Art Asia Pacific

<http://www.artasiapacific.com>

Website of the quarterly Asia Pacific contemporary art magazine.

Asia art News

<http://www.homepages.go.com/~webartnews/index.htm>

arts and cultural news, schedule of events and art related websites.

Art Index

<http://www.artindex.com/links.htm>

Links to galleries (virtual or not), mostly on East Asian art, auctions and museums on Asian art.

Asialink

<http://www.asialink.unimelb.edu.au>

Working since 1990 to promote cultural understanding, information exchange and artistic endeavour between Australia, and Asia, Asialink has set up artists' residencies involving 142 visual artists and arts practitioners.

Asia on RootsWorld

<http://www.rootsworld.com/rw/asia.html>

Reviews of recordings from Southeast Asia.

Australia's Cultural Network

<http://www.acn.net.au>

The definitive on-line gateway to more than 800 Australian cultural websites, which includes links to a multitude of arts events, activities and news.

China Type

<http://www.chinese-art.com>

An excellent online, non-profit contemporary art magazine published out of Beijing which profiles, in imagery, articles and criticism, the contemporary art of China.

Korean Overseas Culture and Information Service (KOCIS)

<http://www.kois.go.kr>

KOCIS plays an important role in expanding the understanding of Korea and its values and strives to disseminate Korean culture around the world through the use of the new information



WWW

technology of the Internet. This site includes information on Korean culture and arts, specifically cultural events, traditional music, modern pop music and cultural heritage.

Oriental Magazine

<http://as.orientation.com>

Asia art richly illustrated and examined in depth. The Orientations magazine (established in 1970) website is an important resources for collectors, connoisseurs and scholars of Asian art.

The Thavibu Virtual Gallery

<http://www.thavibu.com>

a very interesting and abundant virtual art gallery focusing on young and contemporary artists from Thailand, Vietnam and Burma.

Asian arts

<http://www.asianart.com>

this is an online journal for the study and exhibition of the arts of asia. Half way between a virtual gallery and an academic journal. Lots of links also.

ShangArt

<http://www.shangart.com>

One of Shanghai's leading contemporary art galleries.

RESEARCH (ACADEMIC)

Australian National University information Servers for Social Sciences.

<http://coombs.anu.edu.au>

Links to a.o Buddhist Studies, Tibetan Studies, the ANU ftp archive for Social Studies and ANU Social Studies gopher server.

The Virtual Library

<http://www.vlib.org>

almost everything you can find on the web on southeast asia...on arts but also on law, politics...

Universities in Southeast Asia

<http://sunsite.nus.edu.sg>

Part of the Southeast Asian Focus site,

this important website gives essential links to tertiary institutes in Indonesia, Malaysia, Singapore, Thailand and The Philippines.

Ban Chiang, Thailand, Research

<http://www.upenn.edu/museum/Research/banchiang.html>

The history of the multidisciplinary research program connected to the Ban Chiang Project, a joint endeavor of the university of Pennsylvania Museum with the Fine Arts Department of Thailand, is outlined in this website. While this website is designed to interest the non-specialist public in archaeological research, scholarly publications are also listed. Modest monthly additions and are planned to keep the site dynamic.

Southeast Asian Studies Centres

<http://www.niu.edu/acad/cseas/centers.html>

Links to Centres and Associations for Southeast Asian Studies mainly in the USA, but also in Asia and Europe. The site is part of the homepage of the Center for Southeast Asian Studies, Northern Illinois University, USA.

Southeast Asia Web

<http://www.gunung.com/seasiweb/>

'Internet Resources for scholars, researchers and friends of Southeast Asian Studies', maintained by Stephen Arod Shirreffs. Clear distinctions are made between informative and just-for-fun pages.

Southeast Asian Archive

<http://www.lib.uci.edu/rrsc/sasian.html>

The University of California Libraries, Irvine, USA provides the UCI Southeast Asian Archive Newsletter online as well as links to other web pages on Cambodia, the Hmong, the Lao and Vietnam.

The History of Southeast Asia

<http://www.hartford-hwp.com/archives/54/index>

SEA history in general. This website actually features mostly press releases on historical fields (social, cultural history...)

Internet Resources on Southeast Asia

<http://www.library.wisc.edu/guides/SEAsia/resarea.html>

Internet Resources on Southaest Asia: general information, newspapers and journals, history, government, politics, human rights, economics and business, statistics, education, language and literature, health, science and technology, arts and recreation, travel, internet, discussion lists and other websites.

Gateway to Asian Studies

<http://www.iias.nl/gateway/index.html>

The aim of this website is to provide a window to networked information relevant to Asian Studies.

INDONESIA**Indonesian Homepage in Jakarta**

<http://indonesia.elga.net.id>

Good starting point for finding information about and in Indonesia

Indonesia Net

<http://www.indonesia.net>

General information on Indonesia, good for beginners.

Welcome to Indonesia

<http://www.arts.auckland.ac.nz/indo/welcome.html>

Features many resources on Indonesia. Especially good arts and culture links.

Indonesian Art (Web Directory)

<http://www.indonesianart.net>

A very new web directory on arts in Indonesia, with a nice layout, full of information in Bahasa, but almost anything yet in English.

Indonesian Art (Virtual Gallery)

<http://www.indonesianart.com>

A complete virtual gallery featuring Indonesian artists.

MALAYSIA**Information on Malaysia**

<http://www.jaring.my>

According to this website, it is Malaysia's leading cultural portal. It is actually the Lycos portal for Malaysia. It maintains an up to date calendar of events.

The virtual library

<http://www.mtc.com.my/Virtual-Library/Malaysia.htm>

MYANMAR**Emerald Lake**

<http://www.irrawaddy.com>

Poems, music and information on Burmese performing arts.

Myanmar Image Gallery

<http://www.york.cuny.edu/~latt/burma>

a kitsch and funny image gallery on Myanmar, from handicrafts to performing arts and monasteries.

THE PHILIPPINES**The National Commission for Culture and the Arts**

<http://www.ncca.gov.ph/>

Institutional website on the Philippines cultures with lots of articles and schedule of events.

SINGAPORE**Singapore Infomap**

<http://www.sg/arts.html>

Web directory with a panel of arts and entertainment links.

Singapore Fine Arts index

<http://www.rafflesart.com.sg/>

An artists'directory administered by Raffles Fine Arts Auctioneers Pte Ltd.

Ministry of Information and of the Arts

<http://www.gov.sg/mita/aclinks.htm>

Many links to art events, performances and culture in Singapore.



WWW

Sintercom

<http://www.sintercom.org>

the Singapore internet community website with links to contemporary arts performances, events...

THAILAND

General information on Thailand

<http://www.nectec.or.th/thailand/index.html>

Especially on tourism, language or Thai classical music.

Thai Culture

<http://www.thaicultureinfo.iirt.net>

Information about art, drama...this is the Asean-Coci webpage for Thailand, with links to the other Asean countries webpages.

The virtual library entry for Thailand

<http://www.nectec.or.th/WWW-VL-Thailand.htm>

VIETNAM

Vietnam Insight Online

<http://www.insight.org>

A forum carrying the voice of opposition

Viettouch

<http://www.viettouch.com>

A nice website with articles on Vietnamese literature, archaeology, music...

CULTURAL ORGANISATIONS

Culturelink Asia Pacific

<http://www.culturelink.or.kr/>

This is a network of networks for research and cooperation in cultural development. All the institutional and organisational links on culture are there.

Icomos (International Council On Monuments and Sites)

<http://www.icomos.org>

It is an international, non-governmental

organisation dedicated to the conservation of the world's historic monuments and sites.

Unesco (The United Nations Educational, Scientific and Cultural Organisation)

<http://www.unesco.org/whc>

the Unesco maintains a website that identifies world heritage sites.

Check out also

the Asia Pacific Cultural Centre for Unesco

<http://www.accu.or.jp>

The World Monuments Watch

<http://www.worldmonuments.org>

It maintains a list of the world's 100 most endangered man-made sites.

Icom

<http://www.icom.org>

The International Council of Museums website, where you can find some articles and links about museums and heritage issues.

Iccrom

<http://www.iccrom.org>

Website which introduces us to the activities of the International Center for the Study of the Preservation and Restoration of Cultural Property.

MUSEUMS

Musee du Louvre

Paris, France

<http://www.louvre.fr>

Musee Guimet

<http://www.museeguemet.fr>

The museum has reopened recently and displays an extensive collection on Asian and Southeast Asian art.

State Hermitage Museum

St. Petersburg, Russia

<http://www.hermitage.ru>

Museo Del Prado

Madrid, Spain

<http://museoprado.mcu.es>

Museo Guggenheim Bilbao
Bilbao, Spain
<http://www.guggenheim-bilbao.es>

National Gallery of Australia
Canberra, Act
<http://www.nga.gov.au>

The Crow Collection
<http://www.crowcollection.com>
An extremely refined collection on Asian art,
with a virtual tour of the museum.

The Metropolitan Museum of Art
New York, New York, USA
<http://www.metmuseum.org>

The Museum of Modern Art
New York, New York, USA
<http://www.moma.org>

The Art Institute of Chicago
Chicago, Illinois, USA
<http://www.artic.edu>

Philadelphia Museum of Art
Philadelphia, Pennsylvania, USA
<http://www.philamuseum.org>

The J. Paul Getty Museum
Los Angeles, California, USA
<http://www.getty.edu>

National Gallery of Art
Washington, D.C., USA
<http://www.nga.gov>

National Gallery of Canada
Ottawa, Ontario, Canada
<http://national.gallery.ca>

MISC

Lycos
www.lycosasia.com

Yahoo
www.asia.yahoo.com

Excite
<http://www.excite.com/travel/destinations/asia/>
Information on how and where to travel in SEA.
To use as a web directory.

The Virtual Tourist
<http://www.virtualltourist.com/asia>
hotels, guesthouses are rated by the Internet
users. Lots of personal experiences.

Asia Now Homepage (CNN)
<http://www.asia.cnn.com>

Clickable Map of asia
<http://www.nsrc.org/codes/bymap/asia.html>

Links to booksellers
[http://www.iias.nl/gateway/institutional/](http://www.iias.nl/gateway/institutional/booksell.htm/)
[booksell.htm/](http://www.iias.nl/gateway/institutional/booksell.htm/)

The best of asia
<http://www.bestofasiapacific.com>
Good articles and a selection of some of the best
websites in Asia.



NEW ACQUISITIONS

Atsushi Kitahara. **The Thai rural community reconsidered : historical community formation and contemporary development movements.**

Bangkok the Political Economy Centre, Faculty of Economics, Chulalongkorn University, 1996, 190 p.

RURAL DEVELOPMENT-THAILAND/THAILAND-RURAL DEVELOPMENT

Economic crisis in Southeast Asia and Korea : its economic, social, political, and cultural impacts : Conference on the Economic Crisis in Southeast

Asia and Korea, Bangkok, February 2000. Korea : Asian University Network and the Korean Association of Southeast Asian Studies, 2000, 506 p.

ISBN 89-88164-12-1
ECONOMICS-SOUTHEAST ASIA/ECONOMICS-KOREA

Evans, Grant. **Laos : culture and society.** Chiang Mai : Silkworm Books, 1999, 313 p., 23 cm.

ISBN 974-87090-4-3
LAOS-SOCIAL LIFE AND CUSTOMS

Fine Arts Department.
Treasures from Austria : 130 years of imperial and royal friendship : Exhibition at the National Museum in Bangkok 2nd to 26th November 1996.

Bangkok : Amarin Printing, 1996, 39 p.

THAILAND-FOREIGN RELATIONS-AUSTRIA/
AUSTRIA-FOREIGN RELATIONS-THAILAND/

Geoffroy-Schneider, Bérénice.
Tribal arts : Africa, Ocenia, Southeast Asia. New York : the Vendome Press, 2000, 400 p., col.ill., 22 cm.
ISBN 0-86565-215-5
ART, PRIMITIVE

Julthusana Byachrananda.
Thai mother-of-pearl inlay. Bangkok : River Books, 2001, 183 p., col.ill., 27 cm.
ISBN 974-8225-63-1
THAI, MOTHER-OF PEARL INLAY

Khao Yai National Park. Bangkok : Sarakadi, 2000, 157 p. (in Thai language)
ISBN 974-8211-51-7
NATIONAL PARKS-THAILAND-KHAO YAI/THAILAND (KHAO YAI)-NATIONAL PARKS

Loh, Alice, ed. Sir Thomas
Stamford Raffles : a comprehensive bibliography. Singapore : Singapore Resource Library, National Library Board, 1997, 168 p., 26 cm.
RAFFLES, THOMAS STAMFORD, SIR-BIBLIOGRAPHY

Murphy, Dervla. **One foot in Laos.** Cambridge : the University Press, 1999, 284 p., 24 cm.
ISBN 0-7195-5969-3
LAOS-DESCRIPTIONS AND TRAVEL/LAOS-SOCIAL LIFE AND CUSTOMS

Office of Archaeology and National Museum, the Fine Arts Department. **Indigenous Chile.** Bangkok : J.F.P. Printing, 1998, 48 p.

ISBN 974-417-402-1
CHILE-HISTORY/HISTORY-CHILE

Office of Archaeology and National Museum, the Fine Arts Department.

Regional Thai wisdom and technology. Bangkok : Pre Scale, 1999, 152 p.
ISBN 974-418-091-9
THAILAND-SOCIAL LIFE AND CUSTOMS/ARTS AND CRAFTS-THAILAND

Office of Archaeology and National Museum, the Fine Arts Department.

Bangkok Regional wisdom through art and craft. Bangkok : Amarin Printing, 2000, 152 p.

ISBN 974-272-194-7
THAILAND-SOCIAL LIFE AND CUSTOMS/ARTS AND CRAFTS-THAILAND

Office of Archaeology and National Museum, the Fine Arts Department. **Thailand's cultural conservative identity : regional architecture.**

Bangkok : Graphic Format, 1997, 134 p.

ISBN 974-418-055-2
ARCHITECTURE, THAI

Office of the National Education Commission.

Education in Thailand 1997. Bangkok : Seven Printing Group, 1997, 240 p.,



ISBN 974-8086-01-1
EDUCATION-THAILAND/
THAILAND-EDUCATION

Pranee Wongthet. **Ethnology of mainland Southeast Asia.** Bangkok : Ruen Kaew Press, 2000, 326 p.
ISBN 974-600-631-2
ETHNOLOGY-SOUTHEAST ASIA/ASIA, SOUTHEASTERN-ETHNOLOGY

Proceedings of the International Meeting on Microform Preservation and Conservation Practices in Southeast Asia : Assessing Current Needs and Evaluating Past Projects, February 21-24, 2000. Chiang Mai : Chiang Mai University, 2000, 385 p., 26 cm.
MICROFORM-PRESERVATION AND CONSERVATION

Rahula, Walpola. **What the Buddha taught.** Oxford : Oneworld, 2000, 151 p.
ISBN 1-85168-142-6
BUDDHISM

Roscoe, Gerald. **The triple gem : an introduction to Buddhism.** Chiang Mai, Thailand : Silkworm Books, 1994, 186 p.
ISBN 974-7047-27-6
BUDDHISM

Sisak Wanliphodom. **Krung Si Ayutthaya.** 5th ed. Bangkok : Matichon, 2001, 142 p. (in Thai language)
ISBN 974-322-027-5
AYUTTHAYA-HISTORY/
HISTORY-AYUTTHAYA

Somkiart Lopetcharat. **Lao Buddha : the image and its history.** Bangkok : S.O.M. International Co.Ltd., 2000, 301 p., col.ill., 26 cm.
ISBN 974-272-207-2
BUDDA IMAGE-LAO/LAO BUDDA-HISTORY

Stuart-Fox, Martin. **A history of Laos.** United Kingdom : Cambridge University Press, 1997, 256 p., 23 cm.
ISBN 0-521-59746-3
LAOS-HISTORY/LAOS-POLITICS AND GOVERNMENT

Suwit Thirasatsawat. **History of Laos : 1779-1975.** Bangkok : Sangsan Pub., 2000, 465 p.
ISBN 974-87653-1-8
LAOS-HISTORY/HISTORY-LAOS

Tan Kok Meng, ed. **Asian architects.** Singapore : Select Publishing, 2001, 237 p., ill., 27 cm.
ISBN 981-4022-02-2
ARCHITECTURE-ASIA/
ASIA-ARCHITECTURE

Tsuguhito Takeuchi. **Old Tibetan manuscripts from East Turkestan in the Stein collection of the British Library : volume II descriptive catalogue.** UK : the Centre for East Asian Cultural Studies for Unesco and the British Library, 2001, 277 p., 31 cm. (Bibliotheca Codicum Asiaticorum 12)
TIBETAN, MANUSCRIPTS-CATALOGUE

Vickery, Michael. **Society, economics, and politics in pre-Angkor Cambodia : the 7th-8th centuries.** Tokyo : the Centre for East Asian Cultural Studies for Unesco, 1998, 486 p.
ISBN 4-89656-110-4
HISTORY-ANGKOR-7TH-8TH CENTURY

Warren, William and Ping Amranand. **Lanna style : art and design of Northern Thailand.** Bangkok : Asia Books, 2000, 239 p., col.ill., 28 cm.
ISBN 974-872-117-5
LANNA STLYE

Wongvipa Devahastin Na Ayudhya and Jane Marsden Doughty. **Contemporary Thai : style, interiors, decorating ideas.** Bangkok : Asia Books, 2000, 143 p., col.ill., 24 cm.
ISBN 962-593-976-8
THAI STYLE

Yi Tu-Hyon and others. **Korean performing arts : drama, dance & and music theatre.** Korea : Jipmoondang Pub., 1997, 247 p. (Korean studies series no.6)
ISBN 89-303-5006-2
KOREA-PERFORMING ARTS/
PERFORMING ARTS-KOREA

SELECTED ARTICLES FROM SERIALS

"A framework for developing an arts education policy", Culturelink, vol.12, no.34, August 2001, p.33-38.
ARTS EDUCATION



Atagok, Tomur and Oguzhan Ozcan. **"Virtual museums in Turkey."** Museum International, No.1, January-March 2001, p.46-50.
VIRTUAL MUSEUMS-TURKEY/
TURKEY-VIRTUAL MUSEUMS

Branfoot, Crispin. **"Trumala Nayaka's 'New Hall' and European study of the South Indian temple"**, Journal of the Royal Asiatic Society, vol.2, no.2, July 2001, p.191-217.
TEMPLES-INDIA/INDIA-TEMPLES

Busayarat Kooteim. **"Old photos mirror the past"**, Silpakorn, vol.44, no.3, May-June 2001, p.102-106.
THAILAND-SOCIAL LIFE AND CUSTOMS

Butt, Leslie. **"An epidemic of runaway wives : discourses by Dani men on sex and marriage in highlands Irian Jaya, Indonesia"**, Crossroads, vol.15, no.1, 2001, p.55-87.
INDONESIA-IRIAN JAYA-
SOCIAL LIFE AND CUSTOMS

Cha-ame Kaewglai. **"Prasat Ton Tuan Inscription."** Silpakorn Journal, vol.44, no.1, January-February 2001, p.99-104. (text in Thai, abstract in English)
INSCRIPTIONS-PRASAT TON
TUAN (SI SA KET PROVINCE)/
PRASAT TON TUAN (SI SA KET
PROVINCE)-INSCRIPTIONS/

Chaem Kaewkhai. **"An inscription found on the reclining**

Buddha Image of Phu Wiang", Silpakorn, vol.44, no.3, May-June 2001, p.56-61.
INSCRIPTIONS-KHON
KAEN-PHU WIANG

Chia, Stephen. **"The prehistory of Bukit Tengkorak, Sabah, Malaysia"**, Journal of Southeast Asian Archaeology, no.21, 2001, p.149-159.

ARCHAEOLOGY-MALAYSIA-
SABAH/MALAYSIA-SABAH-
ARCHAEOLOGY

Delgado, Coral.
"The ecomuseum in Fresnes : against exclusion." Museum International, No.1, January-March 2001, p.37-41.
ECOMUSEUM-FRESNES

Dendao Silapanondha.
"Hoh Keaw Spirit House in the Borvornsathan Mongkol Palace", Silpakorn, vol.44, no.4, July-August 2001, p.10-17.
THAI SPIRIT HOUSE

Duffy, Terence M. **"Museums of 'human suffering' and the struggle for human rights."** Museum International, No.1, January-March 2001, p.10-16.
MUSEUMS OF HUMAN
SUFFERING AND HUMAN
RIGHTS-NEW YORK

Erickson, Britta. **"The rise of a feminist spirit women artists in China"**, Art AsiaPacific, no.31, 2001, p.64-65.
CHINA-ARTISTS/ARTISTS-
CHINA

Garong, Ame. **"Culture in trash L an archaeological excavation of conciso property shell midden site, Catayauan, Lai-Lo, Cagayan valley, Northern Philippines"**, Journal of Southeast Asian Archaeology, no.21, 2001, p.120-145.

ARCHAEOLOGY-PHILIPPINES/
PHILIPPINES-ARCHAEOLOGY

"H.M.King Rama V's state visit to Sweden in 1897", Thai Culture Magazine, vol.1, no.1, October-November 1999, p.1-3.
THAILAND-FOREIGN
RELATIONS-SWEDEN/
SWEDEN-FOREIGN
RELATIONS-THAILAND

Jarunee Incherdchai.
"Museums in Singapore." Silpakorn Journal, vol.44, no.1, January-February 2001, p.42-59. (text in Thai, abstract in English)
MUSEUMS-SINGAPORE/
SINGAPORE-MUSEUM

Khon Kang Tow. **"Ten favorite Thai dishes served around the world"**, Thai Culture Magazine, vol.1, no.1, October-November 1999, p.24.25.
THAI FOODS

Korapin Taweta. **"An old season's greeting cards."** Silpakorn Journal, vol.44, no.1, January-February 2001, p.4-26. (text in Thai, abstract in English)
GREETING CARDS-THAI
STYLE



Matt, Gerald. **"The Vienna Kunsthalle - its future in the Museum Quarter."** Museum International, No.1, January-March 2001, p.46-50. THE MUSEUM QUARTER-VIENNA/VIENNA-THE MUSEUM QUARTER

Natthapatra Chandavij. **"A warrior's hat of Wiang Haeng."** Silpakorn Journal, vol.44, no.1, January-February 2001, p.82-98. (text in Thai, abstract in English) WARRIOR'S HAT-WIANG HAENG (CHIANG MAI PROVINCE)/WIANG HAENG (CHIANG MAI PROVINCE)- WARRIOR'S HAT

Nguyen Giang Hai. **"Prehistory of South Vietnam through archaeological discoveries in recent year"**, Journal of Southeast Asian Archaeology, no.21, 2001, p.1-15. ARCHAEOLOGY-VIETNAM/VIETNAM-ARCHAEOLOGY

Prapid Pongmas. **"Traces of Japanese soldiers during World War II at Ban Huai Pong."** Silpakorn Journal, vol.44, no.1, January-February 2001, p.60-81. (text in Thai, abstract in English) BAN HUAI PONG (MAE HONG SON PROVINCE)-EXCAVATIONS/EXCAVATIONS- BAN HUAI PONG (MAE HONG SON PROVINCE)

Phichai Tirongkinanon. **"Decha Varachun : experimenting with**

art." Sarakadee, vo.17, no.193, March 2001, p.157-161. (text in Thai, abstract in English) DECHA VARACHUN-THAI ARTIST/ARTIST, THAI-DECHA VARACHUN

Sran Tongpan. **"Muang Boran : a vision of splendor."** Sarakadee, vo.17, no.193, March 2001, p.74-112. (text in Thai, abstract in English) MUANG BORAN-THAILAND

Symyrov, Victor. **"The Gulag Museum."** Museum International, No.1, January-March 2001, p.25-27. GULAG MUSEUM-RUSSIA/RUSSIA-GULAG

Thompson, Sean. **"A doorway to Indochina : Bangkok proves the perfect entrance to the Asian jewels of Cambodia, Laos and Vietnam."** Sawasdee, vol.30, no.4, April 2001, p. INDOCHINA-DESCRIPTION AND TRAVEL

Vanna, Ly. **"Recent archaeology research in the floodplain of the Tonle Sap river : the shell midden site of Samrong Sen and its pottery characteristics"**, Journal of Southeast Asian Archaeology, no.21, 2001, p.47-81. ARCHAEOLOGY-CAMBODIA/CAMBODIA-ARCHAEOLOGY/POTTERY-CAMBODIA/CAMBODIA-POTTERY

Weena Rojanaratha. **"Miscellaneous subjects and views from the revisions of**

Thai chronicles." Silpakorn Journal, vol.44, no.1, January-February 2001, p.35-41. (text in Thai, abstract in English) THAI CHRONICLES

SOURCES

Art AsiaPacific. A quarterly magazine published by Fine Art Publishing Pty Ltd, 42 Chandos Street, St.Leonards, NSW 2065 Australia, email : info@finearts.com.au, <http://www.artasiapacific.com> ISSN 1039-3625

Crossroads. Published two times a year by the Center for Southeast Asian Studies, Northern Illinois University, DeKalb, IL 60115, email : seap@niu.edu, <http://www.niu.edu/cseas/xroads.html> ISSN 0741-2037

Culturelink. Published four times a year by Culturelink/Imo, P.O.Box 303, 10000 Zagreb, Croatia, email : clink@mairmo.irmo.hr, <http://www.culturelink.org>

Journal of the Royal Asiatic Society. Published three times a year by Cambridge University Press, the Edinburgh Building, Shaftesbury Road, Cambridge CB2 2RU, UK, <http://www.cambridge.org> ISSN 1356-1863

Journal of Southeast Asian Archaeology. Published 2 times a year by Japan Society



for Southeast Asian Archaeology,
Department of Archaeology,
Faculty of Letters, the University
of Tokyo, Kongo 7-chome,
Bunkyo, Tokyo, Japan,
113-0033

ISSN 0918-4457

Museum International.

A quarterly journal, published for
the United Nations Educational,
Scientific and Cultural
Organization by Blackwell
Publishers,
108 Cowley Road, Oxford,
OX4 1JF, UK.
ISSN 1350-0775

Sarakadee. A monthly maga-
zine published by Viriya
Business Co.Ltd., 28-30
Parinayok Rd., Phra Nakhon,
Bangkok 10200 Thailand, Tel.
662-281-6110, 281-6240-2, Fax.
662-282-7003
Email: sarakadee@samart.co.th
www.sarakadee.com
ISSN 0857-1538

Silpakorn Journal. Published
twice a year by the Promotion
and Public Relations Section
Office of the Secretariat,
tel. (662) 224-2050, 222-0934
ISSN 0125-0531

Thai Culture Magazine.

Published by the Office of the
National Culture Commission,
Ratchadapisek, Huay Khwang,
Bangkok 10320 Thailand
ISSN 1513-6019

